



SCALABLE SOLUTIONS

- Casino and Gaming Industries
- Correctional Facilities
- Healthcare Facilities
- Hotels and Resorts
- Conference Centers
- Government Agencies
- Multifamily Buildings
- Control Rooms
- Corporate Buildings
- Educational Institutions
- Automotive Businesses
- ...and Much More

www.morsewatchmans.com



USA

2 Morse Road
Oxford, CT 06478
800.423.8256
203.264.4949
fax: 203.264.8367

UK

2 Nottingham Road, Daybrook
Nottingham NG5 6JQ
0115-967-1567
fax: 0115-967-1306



6352-000

EXPANDED COMPUTERIZED KEY CONTROL
WITH TOTAL ACCOUNTABILITY



KEYWATCHER®
KEYBANK®

SECURE SCALABLE
KEY CONTROL



THE MOST RECOGNIZED NAME IN SECURITY MANAGEMENT PRODUCTS

ADVANCED KEY CONTROL

EXPANDABLE SOLUTIONS – SCALABLE IN MANY WAYS.

From a company that is recognized as a leader in the security management industry and backed by over 100 years of product development and service, Morse Watchmans brings you the KeyBank® and KeyWatcher® Key Management Systems. The KeyBank and KeyWatcher offer you a better solution to access control, safeguarding against lost or stolen keys. These are the perfect alternatives for new installations or upgrades from older, more complicated or antiquated key storage devices. Providing you more value, more storage, more flexibility, more scalability and more convenient accessibility, these systems are a must-have solution for:

- **Casino and Gaming Industries**
- **Correctional Facilities**
- **Healthcare Facilities**
- **Hotels and Resorts**
- **Conference Centers**
- **Government Agencies**
- **Multifamily Buildings**
- **Control Rooms**
- **Corporate Buildings**
- **Educational Institutions**
- **Automotive Businesses**
- **...and Much More**

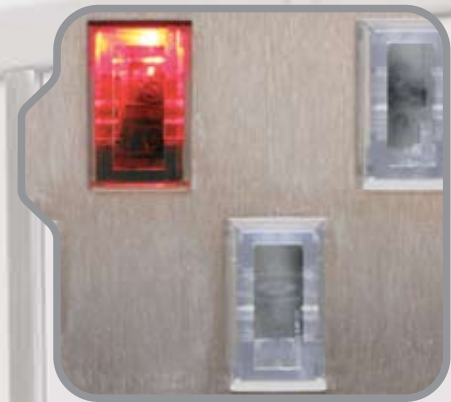


MORSE WATCHMANS CONTINUES TO BRING YOU MORE.

The latest KeyWatcher Key Management System offers you a new sophisticated design and improved access control. Its illuminated key storage system makes finding keys a cinch and provides twice the amount of storage, while using minimal wall space.

Built into a rugged steel cabinet with highly illuminated key slots, the improved design makes it easier to locate keys and maximize wall space. The exterior design of the cabinet has been enhanced to blend in with today's office environments, while the key control system seamlessly controls and monitors keys.

Morse Watchmans engineered the keypad and control console of the new KeyWatcher system to be extremely user-friendly and accessible to the handicapped. The aesthetically-pleasing, smart design actually helps to reduce wall space, while providing easier access.



**New Illuminated
Key Slots**



**Increased Number
of Key Slots**

FEATURES AND OPTIONS:

- Easily identify the proper keys
- Return keys to any location
- Rugged, functional design uses less wall space
- User interface controls various access devices
- Ergonomic design offers ease of use
- Backed by industry-leading warranties

SECURE, SCALABLE KEY CONTROL

KEYWATCHER® AND KEYBANK®

**MORSE
WATCHMANS**
INCORPORATED

SCALABLE SECURITY

**DEPENDABLE AND SCALABLE.
IT'S THAT SIMPLE!**

Built using stainless steel, the cabinet is designed to resist abuse and is wired to alarm against tampering. Yet, the system has limitless configurations – allowing the ability to scale the key management system as needs expand.

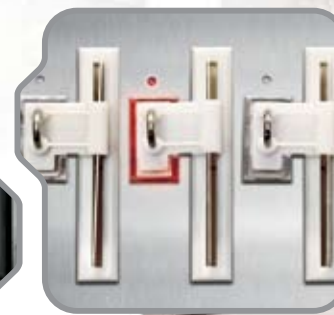
Morse Watchmans makes it simple for you, as the KeyBank and KeyWatcher can hold keys of almost any size, including Folger Adams keys. Plus, the systems are capable of incorporating additional lockers for valuable items.

Each key storage system is powered by AC electricity and is supported by a 48-hour backup power supply. The system is designed with built-in RS-232 and optional Ethernet connectivity for PCs, modems, printers and networks.

The KeyWatcher and KeyBank can work as single key management systems or can be configured with multiple cabinets to hold hundreds of keys. Designed with scalability in mind, each additional unit can be controlled by a single console and monitored by the advanced Key-Pro software. Now, it's easy to expand as your needs grow.

- Expandable to hold up to 2,000 keys
- Easily and accurately control monitor key usage
- Customize cabinets with KeyWatcher lockers and credit card holders
- Locate any key with the new illuminated key slots
- The random key return feature allows you to return any key to any slot, eliminating the confusion and worry of misplaced keys

New KeyWatcher Lockers and Credit Card Holders



SECURE, SCALABLE KEY CONTROL

KEYWATCHER® AND KEYBANK®

**MORSE
WATCHMANS
INCORPORATED**

SMART SECURITY

INTERFACES WITH VARIOUS ACCESS CONTROL DEVICES.

Designed with a built-in keypad and the capability of assigning up to 2,000 User Codes with PINs (Personal Identification Numbers), the KeyWatcher and KeyBank provide unmatched flexibility. The system allows security managers the discretion to appoint one of five different levels of access for each employee. In addition, it offers the expandability of interfacing with a variety of access control devices.

The illuminated display screen clearly displays messages with two lines by 16 characters. The main menu on the display screen shows messages that prompt users to perform a variety of different functions – including removal and replacement of keys.

The KeyWatcher and KeyBank have a tamper-proof mechanism that triggers an alarm if:

- A user tries to gain access to or dislodge a key with force
- An invalid User Code is entered three times consecutively (systems go into an automatic alert mode and lock down for four minutes)
- The door is left open for more than 10 seconds after use
- A key is missing or not returned on time
- There is a power failure
- A key is returned by the wrong user
- A user forces the cabinet doors open

The alarm sound emanates from the KeyWatcher or KeyBank and can be wired throughout the facility and other sounding devices.

NEW! Priority Email Alerts

The key management systems now offer the capability to send priority email alerts to security managers, keeping them informed of the whereabouts of Smart Keys.



THE KEY TO SMART SECURITY.

KEYPRO

Smart Keys – Secure. Functional. Intelligence.

Keys are secured to a Smart Key locking mechanism and memory chip, which provide additional security and functionality for the key management systems. When a Smart Key is inserted into a key slot within a KeyWatcher or KeyBank cabinet, the memory chip data is stored and then retrieved after a key is properly accessed. Users can only access keys from the cabinets with a proper User Code, as designated by their security managers.

Smart Keys help to make the KeyBank and KeyWatcher easy-to-use key control systems. The Random Key Return feature allows users to return keys to any open location of the cabinet and the system will remember the new location for that key. This process avoids the confusion and error of misplacement of keys upon return – a real time saver and convenience to each user.

These two key management systems are perfect as stand-alone devices or in combination with Morse Watchmans Key-Pro Performance Software. The software enhances the capabilities of the system.

Key-Pro Performance Software provides:

- Detailed key management reporting options
- Centralized programming
- Advanced network capabilities
- Improved system communications
- Exclusive real-time transaction polling
- Priority e-mail alerts
- Real-time transactions screens
- Audible alarm notifications



SECURE, SCALABLE KEY CONTROL

KEYWATCHER® AND KEYBANK®


**MORSE
WATCHMANS**
INCORPORATED

ACCESS & ACTIVITY

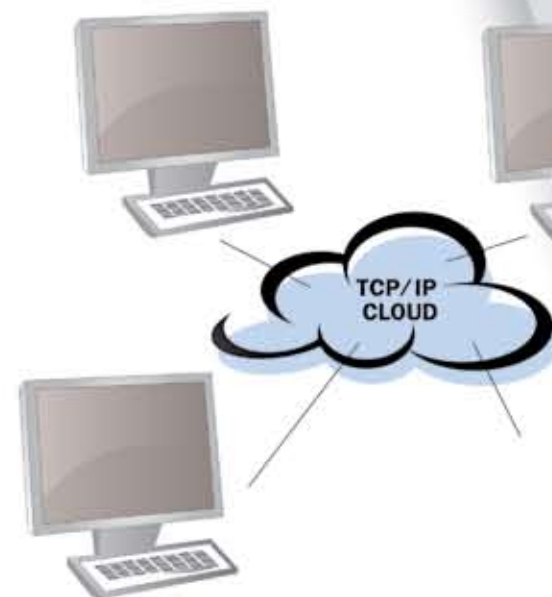
A PROGRAM THAT REPORTS ACCESS AND ACTIVITY.

Key-Pro is a user-friendly PC application that allows you to maximize the usage of your key management system. Designed with remote access capabilities, Key-Pro offers system managers the capabilities and convenience of establishing permission levels for each User Code and monitoring data from any desktop connected to the network. Compatible with both the KeyBank and KeyWatcher systems, this program offers real-time polling transactions and enhances the installation, programming, customizing, maintaining, status, alarms and reporting capabilities of each system. By utilizing this software, system managers will benefit from faster and easier methods of system control and security notifications.

The Key-Pro software can run activity reports, sort based on different criteria, view and print reports, and more. System managers can generate Practical Management Reports, which trace key movements by time, date and User Code. An Audit Trail Report indicates the time and date of every key accessed by a user for a given time parameter.

You can also generate reports by:

- List of keys
- Users
- Keys in use
- Keys removed
- Keys overdue
- ...and Much More



TCP/IP

Another key feature of the software is the built-in scheduler. This tool automatically downloads all data to a secure PC, allowing system managers to sort and analyze the information so they maintain maximum control of access and security issues.

When combined with the Key-Pro software, no other similar product on the market is as technically advanced as the KeyBank and KeyWatcher by Morse Watchmans.



SECURE, SCALABLE KEY CONTROL

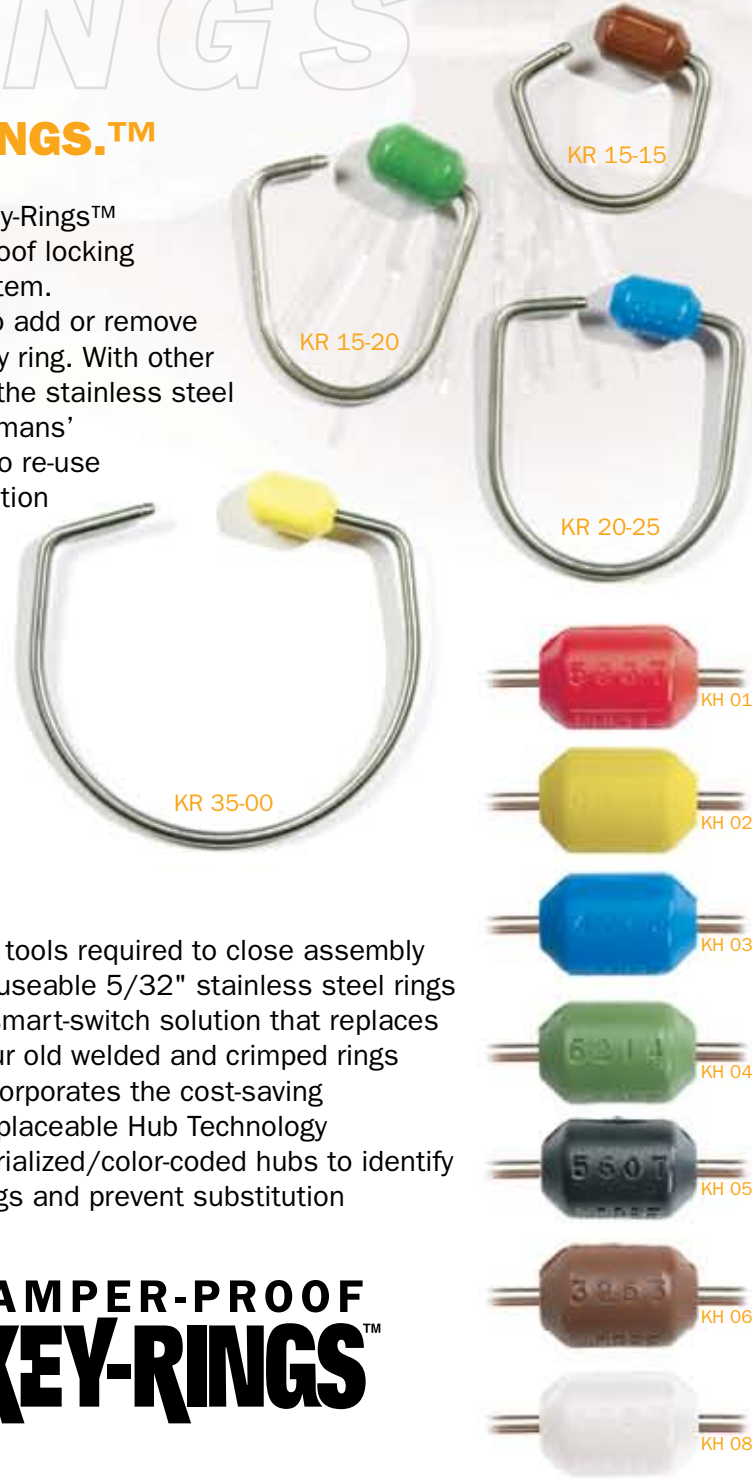
KEYWATCHER® AND KEYBANK®


**MORSE
WATCHMANS**
INCORPORATED

KEY RINGS

TAMPER-PROOF KEY-RINGS.™

Only Morse Watchmans manufactures Key-Rings™ that incorporate ease-of-use, a tamper-proof locking mechanism and unique identification system. This combines to give you the flexibility to add or remove keys without destroying the expensive key ring. With other key rings, you would have to cut through the stainless steel and replace the entire ring. Morse Watchmans' Replaceable Hub Technology allows you to re-use the key ring and replace the hub at a fraction of the cost. Simple to work and easy to re-use, tamper-proof Key-Rings add security and value.



- No tools required to close assembly
- Reuseable 5/32" stainless steel rings
- A smart-switch solution that replaces your old welded and crimped rings
- Incorporates the cost-saving Replaceable Hub Technology
- Serialized/color-coded hubs to identify rings and prevent substitution

TAMPER-PROOF KEY-RINGS™

CUSTOMER SERVICE GUARANTEED.

Morse Watchmans has earned its reputation based on their commitment to customer service and total satisfaction. The KeyBank and KeyWatcher Key Management Systems are both backed by an exclusive two-year warranty on all parts and labor. Another advantage you'll have when selecting Morse Watchmans is free lifetime phone support. It's all about key control, security and service.



www.morsewatchmans.com

THE MOST RECOGNIZED NAME IN SECURITY MANAGEMENT PRODUCTS

SECURE, SCALABLE KEY CONTROL

KEYWATCHER® AND KEYBANK®

MORSE WATCHMANS
INCORPORATED