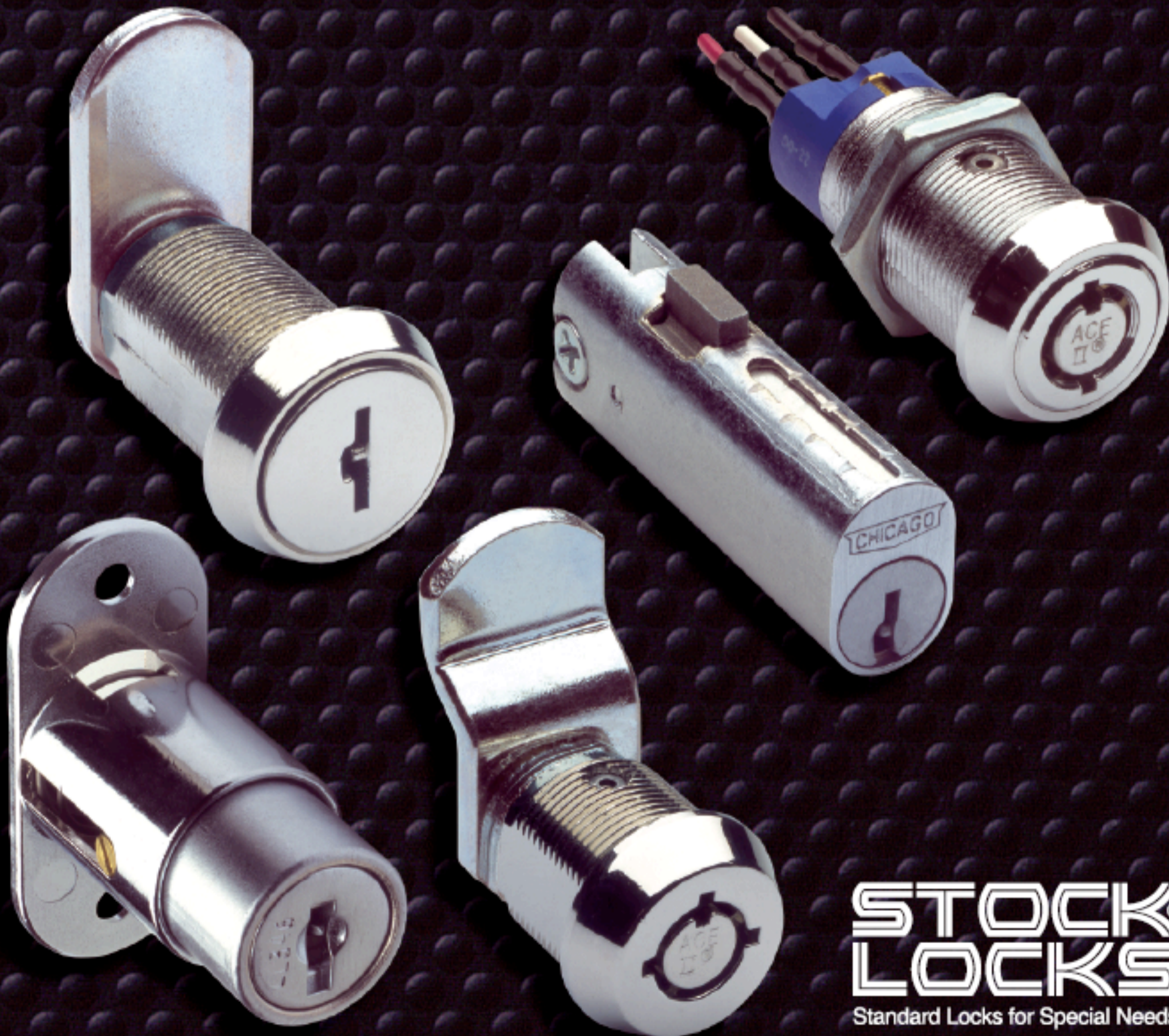


CompX[®]

CHICAGO



STOCK[®]
LOCKS
Standard Locks for Special Needs

A CUT ABOVE.

The proven Ace II®

original tubular lock,

with its all brass

construction and

patented assembly

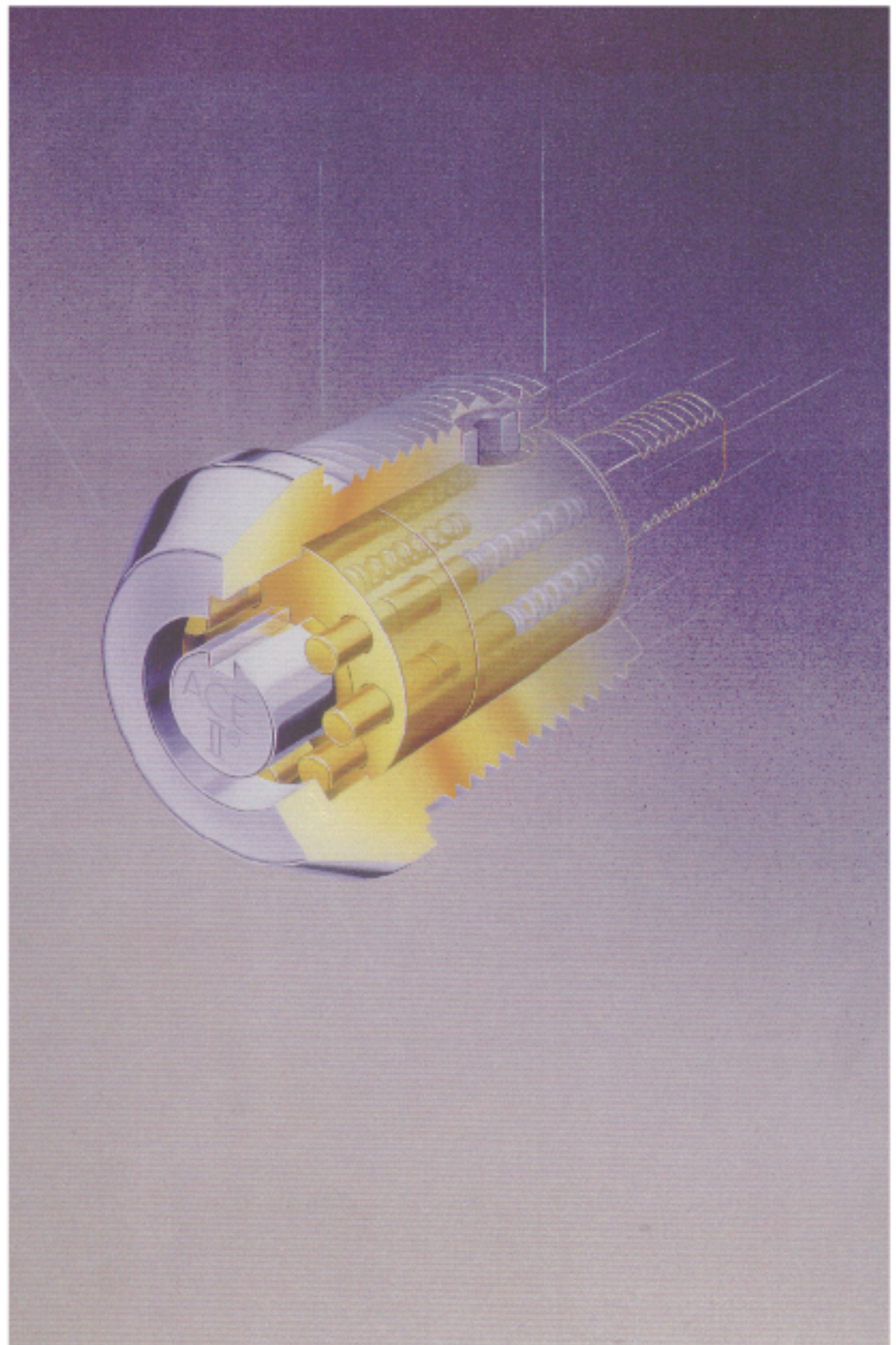
process, provides

professional locksmiths

and their customers

with excellent security

at value prices.



CompX
CHICAGO

Over 80 years of service to the security industry.

The Family Of...



PO Box 200
Mauldin, SC 29662
Phone: 864-297-6655 Fax: 864-297-9987
Email: info@compX.com
compX.com



3000 North River Road
River Grove, IL 60171
Phone: 708-456-1100 Fax: 708-456-9476
Email: sales@compX.com
compX.com

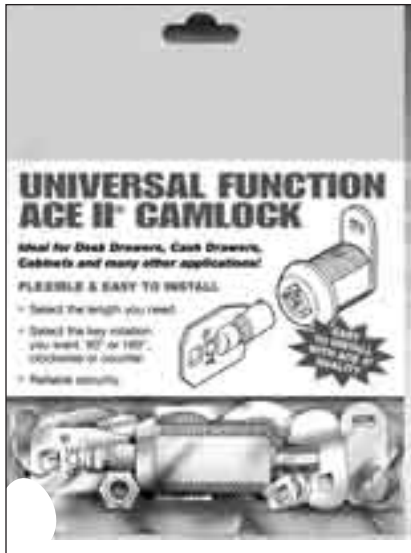


915 Sherwood Drive
Lake Bluff, IL 60044-2203
Phone: 847-234-1864 Fax: 847-234-7922
Email: sales@compX.com
compX.com



PO Box 200
Mauldin, SC 29662
Phone: 864-297-6655 Fax: 864-297-9987
Email: info@compX.com
compX.com

ACE II® CAM TYPE UNIVERSAL FUNCTION LOCKS







Conveniently Packaged! More Versatile Than Ever!

- **Effective Retail Display**—Ready to “Hang,” these new packages include easy to follow instructions for your customers’ replacement lock needs.
- **Convenient Field Use**—The Universal Function package includes everything you need for quick, easy installation of these original factory-quality locks.
- **All brass construction.**
- Patented Ace II® assembly.
- Center plug contains anti-drill pin for added security.
- Standard finish - Polished Nickel.
- Furnished with straight locking cams which can be mounted vertically or horizontally and also a 1/4" offset cam. Cams are 1/8" thick X 3/4" wide.
- Two keys furnished per lock.

STOCK LOCKS

Specifications:

KEY ROTATION/REMOVAL is determined by the **STOP CAM** you select and how it is positioned.

-  A. 180° Clockwise Rotation - Key removal at 12 O’Clock.
-  B. 180° Counter Clockwise Rotation - Key removal at 12 O’Clock.
-  C. 90° Clockwise Rotation - Key removal at 12 & 3 O’Clock.
-  D. 90° Counter Clockwise Rotation - Key removal at 12 & 9 O’Clock.

LOCKING CAM (SEE OPTIONS BELOW)

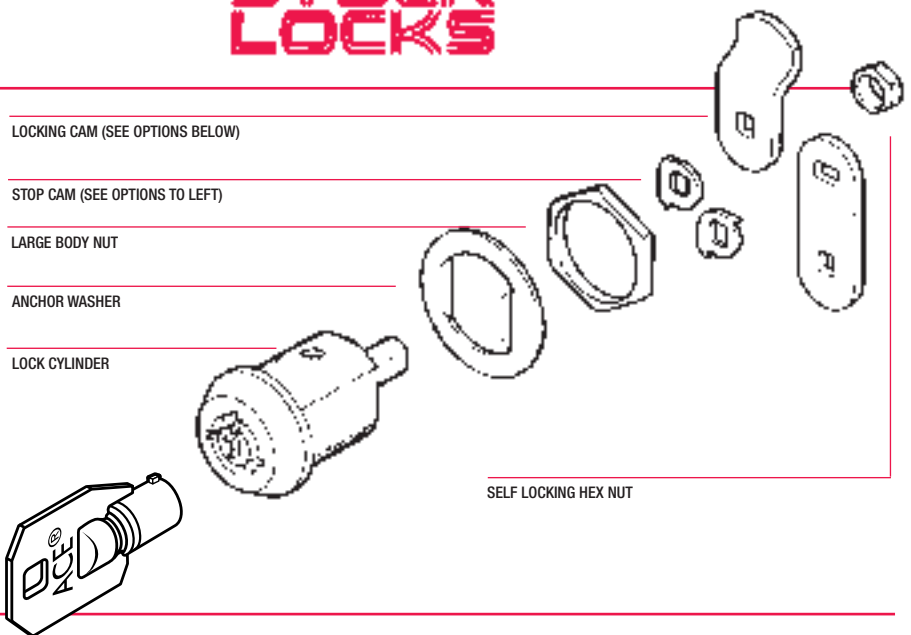
STOP CAM (SEE OPTIONS TO LEFT)

LARGE BODY NUT

ANCHOR WASHER

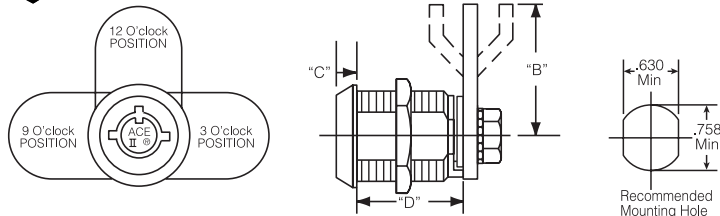
LOCK CYLINDER

SELF LOCKING HEX NUT



To order:

Call your local distributor and specify lock number which corresponds with dimensions required.



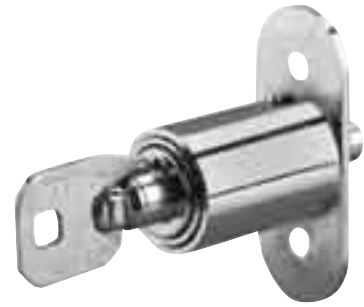
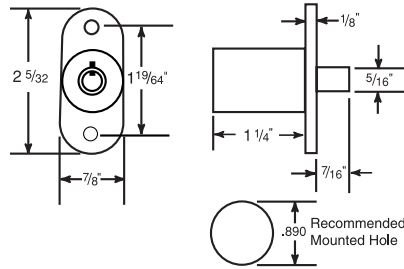
(Standard Package of 25)

| Lock No. | "B" Dim. | "C" Dim. | "D" Dim. | Key Numbers Available / Reference Numbers | | | | | | |
|--------------|-----------------|-----------------|-----------------|---|----------------------|------------------------|----------------------|----------------------|----------------------|-----------------------|
| C4198 | 1 1/8 28.6mm | 23/64 9.04mm | 19/32 15.1mm | KD 99589 | 7525 99588 | 6224 99590 | 6225 99591 | 6226 99592 | 6227 99593 | 7302 99684 |
| C4153 | 1 1/8 28.6mm | 1/4 6.4mm | 11/16 17.5mm | KD 99251 | 7525 99250 | PL-505 99252 | 7302 99253 | 6301 99594 | 6302 99595 | 6602 99624 |
| C4153 | 1 1/8 28.6mm | 1/4 6.4mm | 11/16 17.5mm | 6029 99254 | 6030 99255 | 6031 99256 | 6032 99257 | 6303 99596 | 6234 99597 | PL910 99625 |
| C4152 | 1 1/8 28.6mm | 13/64 5.2mm | 15/16 23.8mm | KD 99241 | 7525 99240 | PL-505 99242 | 7302 99243 | 6401 99598 | 6402 99599 | PL910 99626 |
| 4152 | 1 1/8 28.6mm | 13/64 5.2mm | 15/16 23.8mm | 6003 99244 | 6021 99245 | 6022 99246 | 6023 99247 | 6403 99600 | 6404 99601 | 6605 99627 |
| C4160 | 1 1/8 28.6mm | 13/64 5.2mm | 13/32 27.8mm | KD 99471 | PL-960 99472 | PL-505 99602 | 6501 99603 | 6502 99604 | 6234 99605 | 7302 99685 |

All part numbers shown in red are available through the **STOCK LOCKS** program.

SLIDING DOOR LOCKS

- Reliable ACE II® cylinder can be keyed compatibly with other ACE II® models.
- Solid die cast housing and locking pin
- Retrofits most existing sliding door locks
- Easy cylinder removal for replacement or rekeying
- Available keyed alike, keyed different, keyed in groups and masterkeyed to special order
- Bright chrome finish
- Furnished with two keys per lock



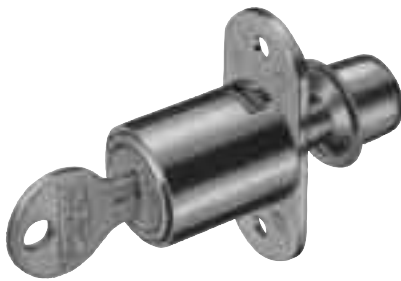
NO. C5170

ACE II®

Available with optional
ACE® Change-Matic® cylinder

Lock No. **C5170** (Standard Package of 10)

| Reference No. | 99135 | 99136 | 99137 | 99138 | 99139 | 99134 |
|---------------|-------------|-------------|-------------|-------------|-------------|-----------|
| Keying | K/A | K/A | K/A | K/A | K/A | KD |
| | 7302 | 7525 | 6030 | 6303 | 6602 | |



NO. C1770

Single Bitted

- Five disc tumbler plug in 7/8" diameter
- Die cast barrel
- No. 1770 utilizes a spring bolt which locks by pushing the cylinder in and released by turning the key 90° from locked (12 O'Clock) to unlocked (3 O'Clock) position.
- No. 1775 uses a rotating "T" type plunger operated by rotating the key 90° and pushing the plunger into the lock, or releasing to unlock.
- Keypull in locked and unlocked positions
- Standard finish—Satin Chrome
- Mounting plate is 5/64" X 7/8" X 2" with 1 1/2" between mounting hole centers
- Furnished with two keys per lock

Lock No. **C1770** (Standard Package of 10)

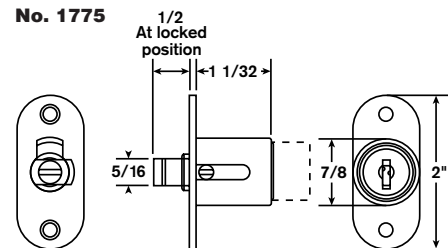
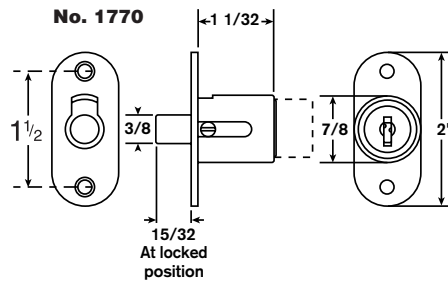
| Reference No. | 99072 | 99071 |
|---------------|-------------|-------------|
| Keying | K/A | KD |
| | 1289 | 1454 |

Lock No. 1775

| Reference No. | 99362 | 99361 |
|---------------|-------|---------|
| Keying | K/A | Keyed |
| | 1289 | Various |

Key Blank K-5 (Standard Package of 50)

| Reference No. | 99559 |
|---------------|-------|
| | |



**STOCK
LOCKS**

CompX
CHICAGO

All part numbers shown in red are available through the STOCK LOCKS program.

SERVICE PARTS KITS

Ace® Factory Original Parts now in Convenient Service Kits for Locksmiths!

Ace® Locking Cam and Tumbler Service Kits
from Chicago Lock save invaluable time!

**STOCK
LOCKS**

They provide all the parts needed to service locks in one compact container. No more wasted trips back to the shop to find forgotten tumblers, springs...it's all right at your fingertips.

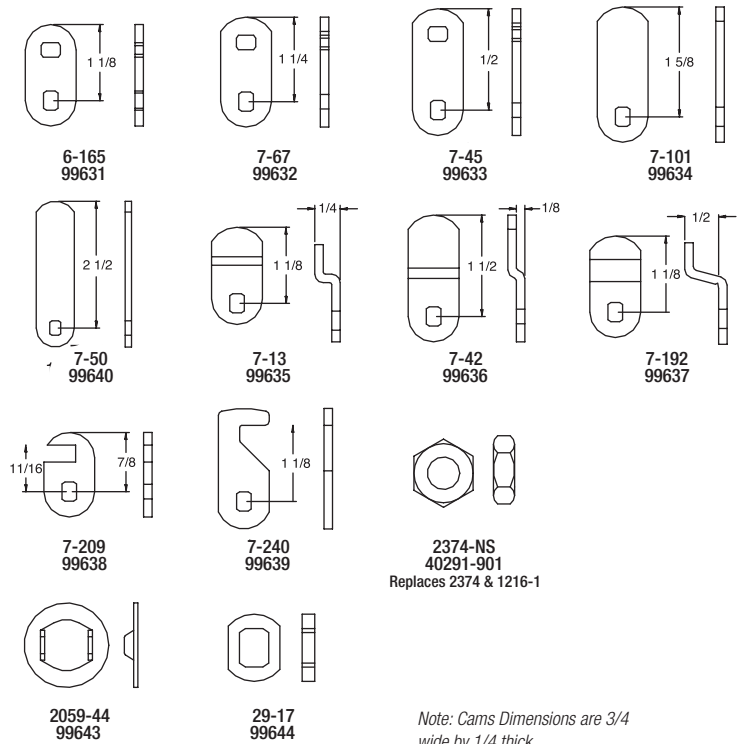
Single and Double Bitted Service Kits also available (see page 5).

Contact your local distributor to order and save both time and money!



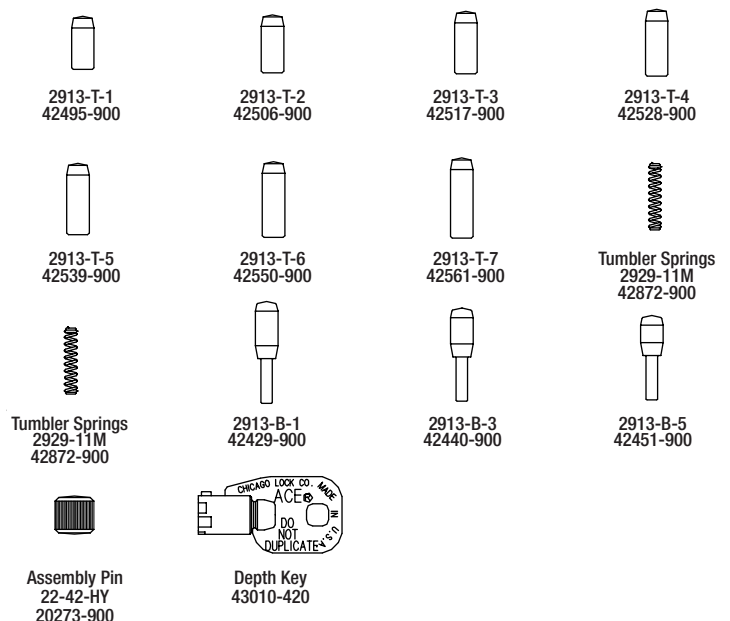
Ace® Locking Cams Service Kit

Part No. **D9629**



Ace® Tumbler Service Kit

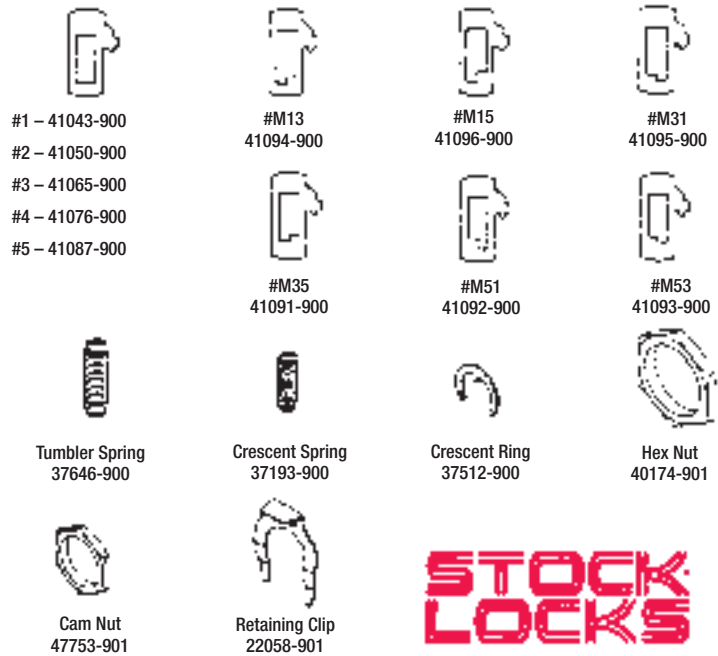
Part No. **D9630**



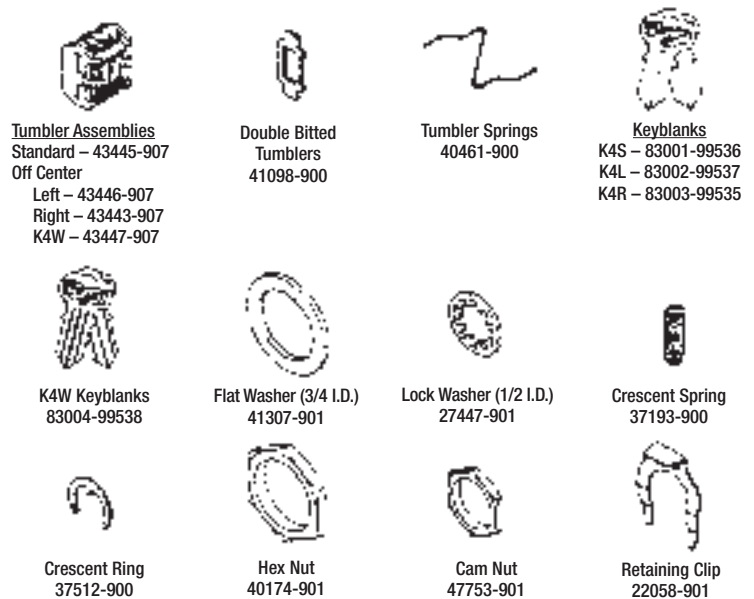
All part numbers shown in red are available through the STOCK LOCKS program.



Single Bitted Service Kit - Part No. **D9094**



Double Bitted Service Kit - Part No. **D9095**



Replacement Parts for Service Kits

| Reference No. | Description | Std. Pkg. |
|---------------|-----------------|-----------|
| 99631 | Ace Cam | 10 |
| 99632 | Ace Cam | 10 |
| 99633 | Ace Cam | 10 |
| 99634 | Ace Cam | 10 |
| 99635 | Ace Cam | 10 |
| 99637 | Ace Cam | 10 |
| 99638 | Ace Cam | 10 |
| 99639 | Ace Cam | 10 |
| 99640 | Ace Cam | 10 |
| 99641 | Hex Nut | 25 |
| 99642 | Lock Washer | 25 |
| 99643 | Mounting Washer | 25 |
| 99644 | Cam Adaptor | 25 |

GUIDE KEY SET

402 Cut Keys

- Numbered from 2001 to 2576, but not in consecutive order. 2400 Series is not included.
- Order item **#D9402**.

KF Series Cut Keys

- Cut Keys for KF series only.
- Reference item #99404.

KEY CODE BOOK

Coding For Chicago Lock's Most Popular Keys.

- Binder includes coding for the most frequently used single bitted, double bitted and pin tumbler keys.
- Order item **#D9401**.

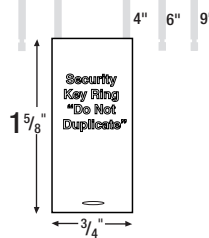
All part numbers shown in red are available through the **STOCK LOCKS** program.

KEYLOC™ / STEELCASE® REPLACEMENT PLUGS



KeyLOC™ – The NEW tamper evident key ring from Chicago Lock.

- Vinyl coated steel cables – the same used in the aircraft industry – resistant to cutting. If cut, cable is non-repairable.
- Cables are available in 3 sizes: 4", 6" and 9" loops. Key ring loops hold 10 to 50 keys.
- Retainer pins fit securely into patented ACE II® Cylinder nested in lightweight aluminum housing. Tampering of any kind is revealed immediately.
- Security ring clearly warns "DO NOT DUPLICATE."
- Easy 1/4 turn cable installation.
- All units supplied with 2 keys each. Includes security seal.
- Scratch resistant vinyl cover available soon. Call for more information.



**STOCK
LOCKS**

| Lock # | Ref.# | Key # | Std. Pkg. |
|---------|---------|----------------------|--|
| C4201 | 99260 | KD | 1 |
| | 99261 | 6201 | Consists of 4", 6" & 9" Cable Assembly |
| | 99263 | 6230 | |
| | 99264 | 6248 | |
| 99265 | 6255 | | |
| C4201-4 | 99167 | KD | 5 |
| | 99168 | 6201 | Consists of 4" Cable Assembly |
| | 99169 | 6230 | |
| | 99170 | 6248 | |
| | 99171 | 6255 | |
| C4201-6 | 99172 | KD | 5 |
| | 99173 | 6201 | Consists of 6" Cable Assembly |
| | 99174 | 6230 | |
| | 99175 | 6248 | |
| | 99176 | 6255 | |
| | C4201-9 | 99177 | |
| 99178 | | 6201 | Consists of 9" Cable Assembly |
| 99179 | | 6230 | |
| 99187 | | 6248 | |
| 99188 | | 6255 | |
| 4201-LC | | 99195 | |
| | 99196 | 6201 | |
| | 99197 | 6230 | |
| | 99198 | 6248 | |
| | 99199 | 6255 | |
| 56193 | 4201-5A | Cable only (4" Loop) | |
| 56194 | 4201-5B | Cable only (6" Loop) | |
| 56195 | 4201-5C | Cable only (9" Loop) | |
| 137CLC | 99534 | 50 Key Blanks | |

STEELCASE® REPLACEMENT PLUGS



Complete Plug Assembly
P1076-Series



Plug-Sub Assembly
CP1076-Series (Retaining Tumbler Only)

Take advantage of a tremendous replacement market. Millions of Steelcase desk locks are now in use!

- Retrofits in seconds with the use of the removal tool.
- 6 disc tumbler construction easily rekeyable with 99094-000 Service Kit.
- Set up your own code systems for each customer with the CP-1076-90 Sub-assembled plug and 99094-000 Service Kit.
- Sold in packages of 10.

| Description | Lock No. | Reference No. |
|--|-----------------|---------------|
| Loaded Plug w/2 Keys (Specify Keyway K101-K104 or our choice) | P-1076 | |
| | Keyed Alike | 99662 |
| | Keyed Different | 99656 |
| Un-Loaded Plug (No Keys / Retainer Tumbler only) | Keyed in Groups | 99657 |
| | CP-1076-90 | |
| | Keyway | |
| | K101 | 99658 |
| | K102 | 99659 |
| | K103 | 99660 |
| | K104 | 99661 |
| Removal Tool | K-100 RK68 | N/A |

Steelcase is a registered trademark of Steelcase, Inc., Grand Rapids, Michigan.

All part numbers shown in red are available through the STOCK LOCKS program.

"T" HANDLE ASSEMBLIES

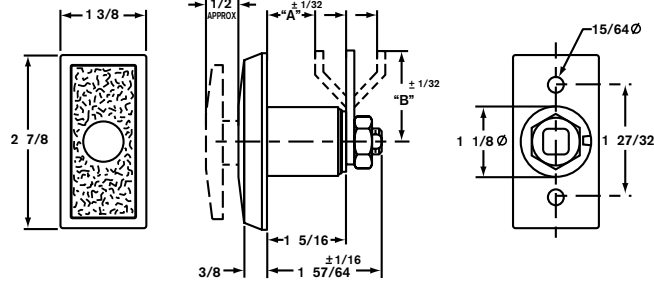


NO. OU-4260

Handle and Cylinder dimensions do not conform to NAMA dimensional standards.

For Limited Spaces.

- Accepts Ace II® cylinder No. 4260-19. See page L8.
- To use flat key cylinder No. P-1060-19, order "T" Handle No. OU-4260-6T.
- Available with 4260-19 or P-1060-19 cylinders only.
- Standard finish — Chrome.
- Customer must furnish "A" and "B" Dimension.

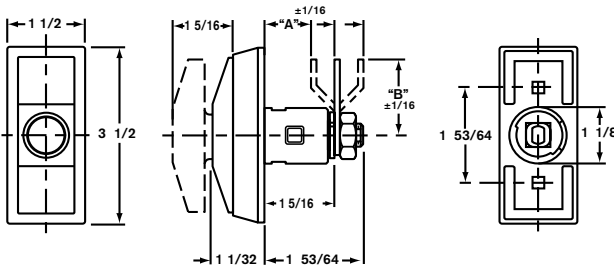


New! 4200 Series. Retrofits OU-4260 & OU-5560 "T" Handles.

- Increased security for limited spaces.
- Accepts standard & long cylinder locks which meet NAMA dimensional standards.
- Available in 1/4 turn, clockwise or counter-clockwise.
- Locking cams can be manufactured per customer requirement, cam not included.
- Available 90° or 180° rotation.
- Textured finish for scratch resistance. Standard finish — Chrome.
- Black finish available. Minimum order may apply.



NO. OU-4200-NA



STANDARD SCREW TYPE

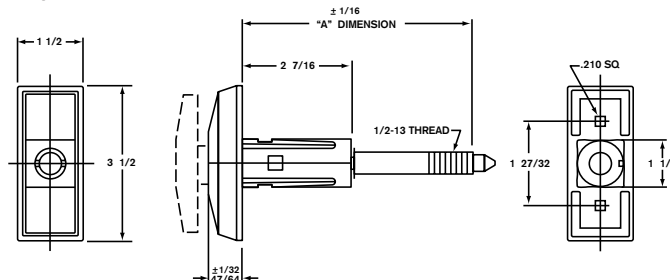


NO. OU-4265-NA

All "T" Handles with suffix NA will accept cylinders which meet NAMA dimensional standards.

Easily Tighten Door Without Losing Seal.

- When fully extended, handle is free wheeling to 360°.
- When partially depressed, handle is free wheeling to 120°.
- Furnished with 1/2 x 13 threaded stud.
- Front design has built up flange and tapered "T" Handle construction.
- Accepts standard & long cylinders which meet NAMA dimensional standards.
- Textured finish for scratch resistance. Standard finish — Chrome.
- Customer must specify "A" Dimension.
- Minimum order may apply for non-standard stud lengths.
- Optional stainless steel handle available.



NOTE: When ordering T-Handles specify all information for proper stud.

"T" HANDLE CYLINDER LOCKS

STOCK LOCKS

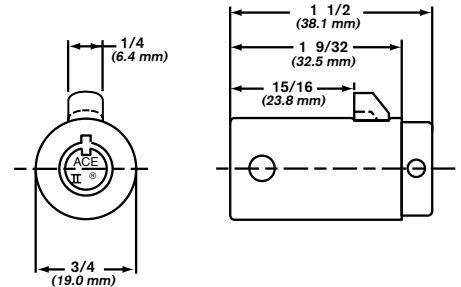
CYLINDER LOCKS



NO. C425519RL

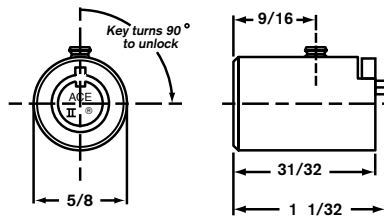
C425519RL

- 7 Pin tumbler.
 - Brass locking bolt.
 - Set screw hole for anti-pull feature when used in "T" Handle with set screw feature.
 - Standard finish — Chrome.
 - Thousands of combinations available.
 - Furnished with 2 keys each.
 - **Meets NAMA dimensional standards.**
 - Available keyed alike, keyed different, keyed in groups.
 - For application options see pages L7. (Standard package of 10)
- KD, KA to SP802, SP803, SP804, L463**



C4260-19

- For use in OU-4260 "T" Handle only. See page L7.
 - 7 pin tumbler.
 - Brass locking pin.
 - Standard finish — Chrome.
 - Thousands of key combinations available.
 - Furnished with 2 keys each.
 - Available keyed alike, keyed different & keyed in groups.
- KD, KA to L463**

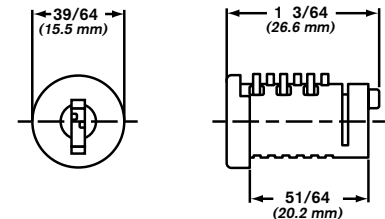


NO. C4260-19



NO. P-1060-19

- For use in OU-4260-6T "T" Handle only. See page L7.
- 6 disc tumblers.
- Over 200 key combinations available.
- Furnished with 2 keys each.
- Master keying available at additional cost.



All part numbers shown in red are available through the STOCK LOCKS program.

DOUBLE & SINGLE BITTED CAM LOCKS

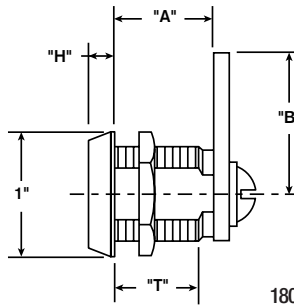


DOUBLE BITTED

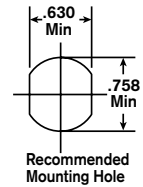
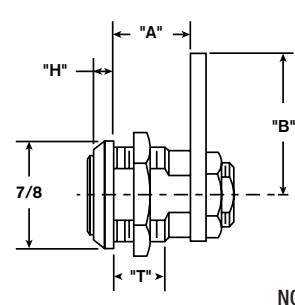


NO. C3186

- Eleven criss-cross blade tumbler plug in 3/4" diameter.
- Die cast barrel with two flats — 5/8" across.
- Key and cam rotation 90° from locked (12 O'Clock) to unlocked (3 O'Clock) position with keypull in locked position only.
- Straight cam furnished is 1/8" thick X 3/4" wide.
- Standard finish — Polish Nickel.
- Two keys furnished per lock.



1800 SERIES



Recommended Mounting Hole

NO. C3186 & C3205

(Standard Package of 25)

| Lock No. | "A" Dim. | "B" Dim. | "H" Dim. | "T" Dim. | KD | KA #2001 | KA #2007 | KA |
|----------|----------|----------|----------|----------|-------|----------|----------|------------------|
| C3205 | 7/16" | 1 1/8" | 13/64" | 15/64" | 99201 | 99202 | 99203 | KA #2141 - 99204 |
| C3186 | 5/8" | 1 1/8" | 5/32" | 13/32" | 99191 | 99192 | 99193 | KA #781 - 99194 |
| C1801 | 13/16" | 1 1/8" | 13/64" | 11/16" | 99084 | 99085 | 99086 | KA #2141 - 99087 |
| C1802 | 1 1/16" | 1 1/8" | 13/64" | 15/16" | 99096 | 99097 | 99098 | KA #2141 - 99099 |
| 1803 | 1 3/16" | 1 1/8" | 13/64" | 1 7/64" | 99104 | 99105 | 99106 | KA #2141 - 99107 |
| C1804 | 1 1/2" | 1 1/8" | 13/64" | 1 13/32" | 99114 | 99115 | 99116 | KA #2141 - 99117 |

C3205 and C3186 Available KD, KA to 2001 and 2007.

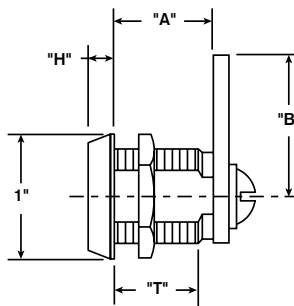
C1801 and C1804 Available KA only to 2001. C1802 Available KA to 2001 and 2007.

SINGLE BITTED

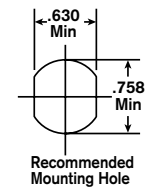
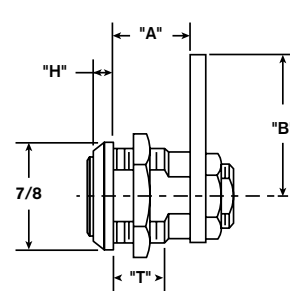


NO. C3786

- Five disc tumbler plug in 3/4" diameter.
- Die cast barrel with two flats — 5/8" across.
- Key and cam rotation 90° from locked (12 O'Clock) to unlocked (3 O'Clock) position with keypull in locked position only.
- Straight cam furnished is 1/8" thick X 3/4" wide.
- Standard finish — Polish Nickel
- Two keys furnished per lock.



1700 SERIES



Recommended Mounting Hole

NO. 3786

(Standard Package of 25)

| Lock No. | "A" Dim. | "B" Dim. | "H" Dim. | "T" Dim. | KD | KA #1289 | KA #1454 |
|----------|----------|----------|----------|----------|-------|----------|----------|
| 3705 | 7/16" | 1 1/8" | 1/4" | 13/64" | 99617 | 99618 | 99619 |
| C3786 | 5/8" | 1 1/8" | 13/64" | 13/32" | 99211 | 99212 | 99213 |
| C1701 | 13/16" | 1 1/8" | 13/64" | 11/16" | 99024 | 99025 | 99026 |
| C1702 | 1 1/16" | 1 1/8" | 13/64" | 15/16" | 99034 | 99035 | 99036 |
| C1703 | 1 3/16" | 1 1/8" | 13/64" | 1 7/64" | 99044 | 99045 | 99046 |
| C1704 | 1 1/2" | 1 1/8" | 13/64" | 1 13/32" | 99054 | 99055 | 99056 |

C3786, C1703 and C1704 Available KD, KA to 1289 and 1454.

C1701 Available KA only to 1289 and 1454. C1702 Available KD and KA to 1454.

All part numbers shown in red are available through the STOCK LOCKS program.

CHICAGO LOCK KEYBLANKS

Genuine Chicago Lock key blanks are packed 50 per box.
Order in multiples of 50.

**STOCK
LOCKS**



DK-4-L
Off Center Left
99535



DK-4
Center Groove
99536



DK-4-R
Off Center Right
99537



DK-4-W
"W" Milling
99538



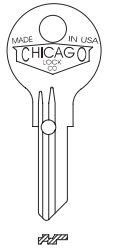
DK-2-W
"W" Milling
99539



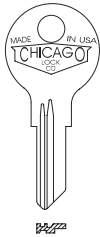
DK-2
Center Groove
99542



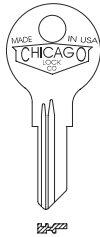
DK-18
Thicker Blank
99540



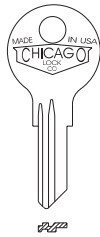
DK-103-G
6-Tumbler
99606



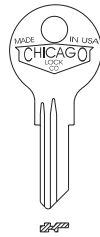
DK-501
5-Tumbler
83170



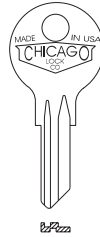
DK-502
5-Tumbler
83171



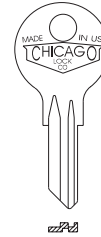
DK-503
5-Tumbler
83172



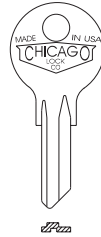
DK-504
5-Tumbler
83173



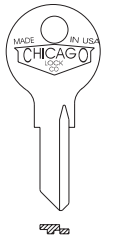
DK-5
5-Tumbler
99559



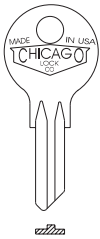
DK-9
5-Tumbler
99562



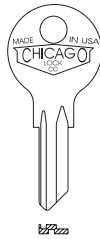
DK-35
5-Tumbler
99565



DK-35-M
5-Tumbler
99566



DK-38
5-Tumbler
99569



DK-39
5-Tumbler
99570



DK-P-1
4-Pin Tumbler
99574



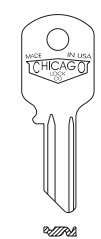
DK-P-2
4-Pin Tumbler
99570



DK-P-3
4-Pin Tumbler
99576



DK-P-4
4-Pin Tumbler
99577

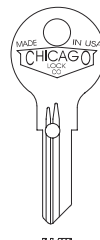


DK-P-9
4-Pin Tumbler
99581

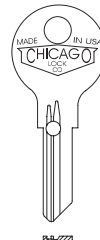


MADE IN U.S.A.
137CLC
CHICAGO LOCK CO.
ACE® & ACE II®
Keyblank
99534
D137-CLC

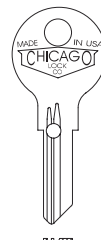
**GENUINE
CHICAGO
LOCK CO.
KEY BLANKS
DESIGNED FOR
STEELCASE
EQUIPMENT
LOCKS.**



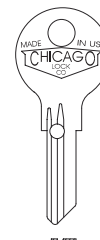
DK-101-H
6-Tumbler
99549



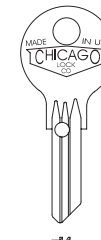
DK-102-H
6-Tumbler
99551



DK-103-H
6-Tumbler
99553



DK-104-H
6-Tumbler
99555



DK-100-MH
6-Tumbler
99557

Steelcase is a registered trademark of Steelcase, Inc., Grand Rapids, Michigan.

All part numbers shown in red are available through the STOCK LOCKS program.

PADLOCKS

40MM PADLOCKS / 50MM PADLOCKS

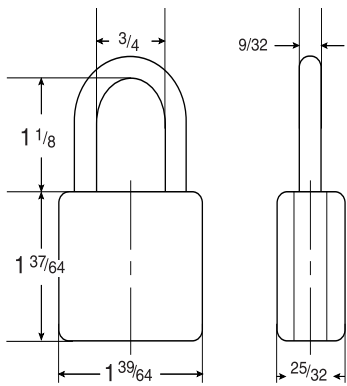


NO. RC-4841

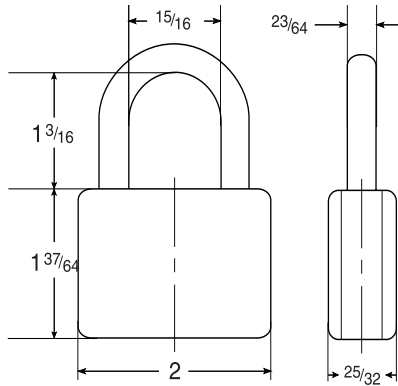


NO. RC-4842

40mm Padlock



50mm Padlock



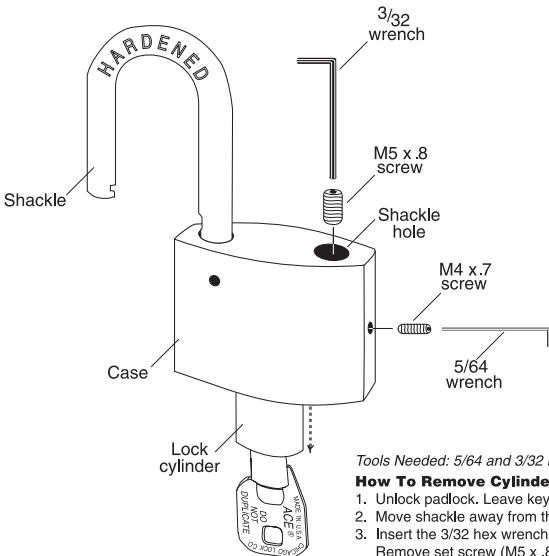
Dimensions shown are without vinyl covers

New RC Series! Our Finest Security Padlock.

- Two sizes available: 40mm and 50mm.
- Removable core and shackle.
- Extruded brass body.
- Hardened steel shackles to resist cutting and sawing.
- ACE II® patented assembly process locking mechanism. (Optional locking cylinders available: Change-Matic and Master-keying)
- 7 pin tubular lock with 2 keys.
- Self locking
- Additional shackle sizes and scratch resistant vinyl cover available.
- Frequent lubrication is recommended.

| Lock # | Ref.# | Key # | Std. Pkg. |
|---------|-------|----------|-----------|
| RC-4841 | 99291 | KD | 5 |
| | 99292 | KA-PL505 | |
| | 99293 | KA-7302 | |
| | 99294 | KA-6225 | |
| RC-4842 | 99301 | KD | 5 |
| | 99302 | KA-PL505 | |
| | 99303 | KA-7302 | |
| | 99304 | KA-6225 | |

How to remove/reinstall cylinder and shackle.



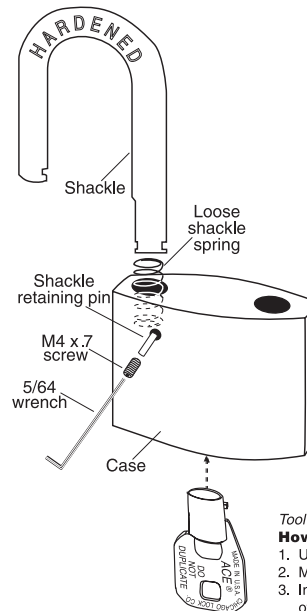
Tools Needed: 5/64 and 3/32 Hex Wrenches.

How To Remove Cylinder

1. Unlock padlock. Leave key in open position.
2. Move shackle away from the case.
3. Insert the 3/32 hex wrench into the shackle hole. Remove set screw (M5 x .8).
4. Insert the 5/64 hex wrench into the hole on the side of the case. Remove cylinder retaining screw (M4 x .7).
5. Hold key and gently pull cylinder out of case. (Save the loose stop washer for reassembly).

How To Reinstall Cylinder

1. Attach stop washer to the end of the lock cylinder.
2. Slide cylinder all the way down into padlock case.
3. Insert cylinder retaining screw (M4 x .7) into side of case. Tighten firmly with 5/64 hex wrench.
4. Insert set screw (M5 x .8) into shackle hole. Tighten firmly with 3/32 hex wrench.



STOCK LOCKS

Tool Needed: 5/64 Hex Wrench.

How To Remove Shackle

1. Unlock padlock and remove key.
2. Move shackle away from the case.
3. Insert the 5/64 hex wrench into the hole in the front of the case. Remove set screw (M4 x .7) and the shackle retaining pin.
4. Remove the shackle from the padlock. (Save the loose shackle spring for reassembly).

How To Reinstall Shackle

1. Be sure that shackle spring is in the shackle hole.
2. Insert new shackle and lock the padlock.
3. Insert retaining pin and set screw (M4 x .7) into the hole on front of the case. Tighten firmly with 5/64 hex wrench.

All part numbers shown in red are available through the STOCK LOCKS program.

SCREW TYPE / BOLT TYPE LOCKS



ACE II® SEVEN PIN TUMBLER SCREW TYPE

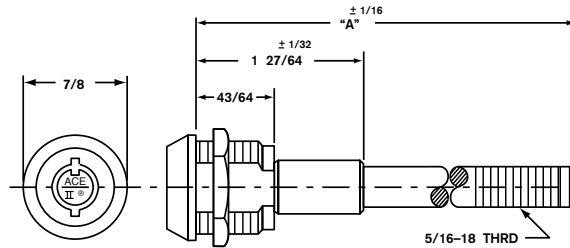


NO. CSA4107

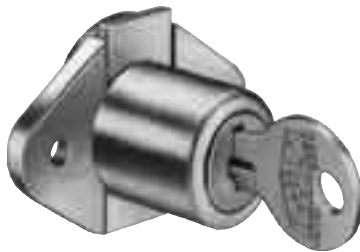
- Patented Ace II® lock assembly in 3/4" diameter.
- Barrel with two flats — 5/8" across.
- 360° key rotation with keypull every 180° (12 and 6 O'Clock).
- Two keys furnished per lock.
- Includes body nut.
- Additional stud lengths available to special order. Minimum order and extended lead time may apply.

| Lock No. | "A" Dim. | KD | KA #7341 |
|----------|----------|-------|----------|
| CSA4107 | 7 1/32" | 99461 | 99462 |

(Standard Package of 10)

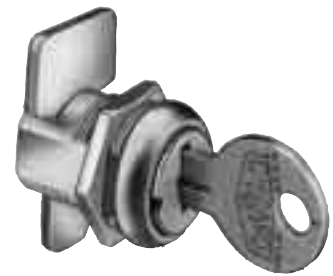


BOLT TYPE



NO. C1968

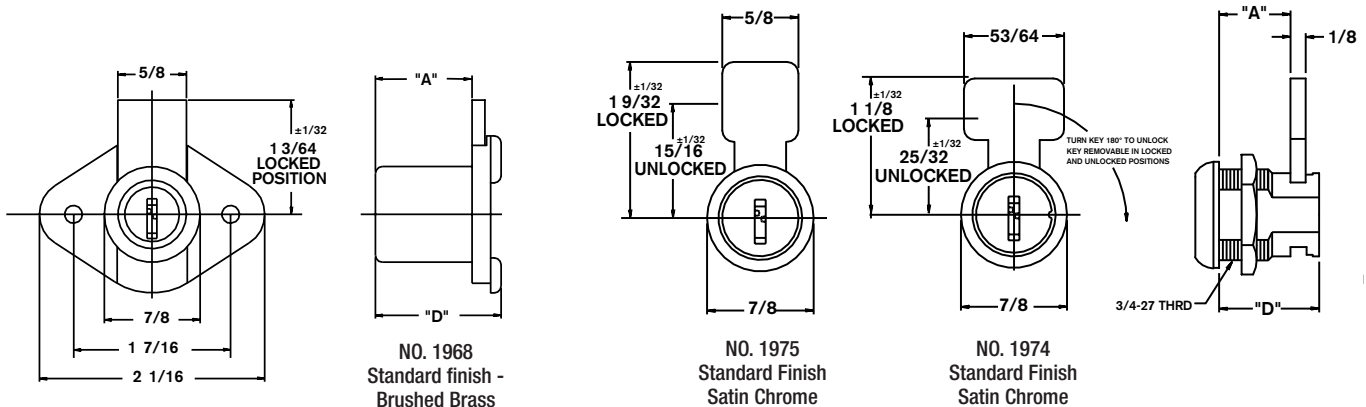
- Five disc tumbler.
- Removable plug feature.
- Steel locking bolt.
- Two keys furnished per lock.



NO. C1974

(Standard Package of 25)

| Lock No. | "A" Dim. | "D" Dim. | Key Numbers Available/Reference Numbers | | | |
|----------|----------|----------|---|-------|-------|-------|
| C1968 | 57/64" | 1 5/32" | 1276 | KD | 1289 | 1454 |
| | 22.6mm | 29.6mm | 99120 | 99121 | 99122 | 99123 |
| C1974 | 19/32" | 27/32" | 1276 | KD | 1289 | 1454 |
| | 15.1mm | 21.4mm | 99130 | 99131 | 99132 | 99133 |
| C1975 | 21/32" | 57/64" | 1276 | KD | 1289 | 1454 |
| | 16.7mm | 22.6mm | 99140 | 99141 | 99142 | 99143 |

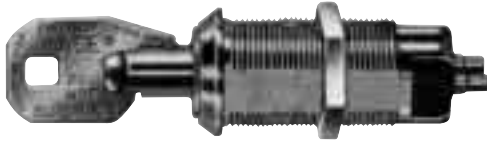


All part numbers shown in red are available through the STOCK LOCKS program.

SWITCH LOCKS

**STOCK
LOCKS**

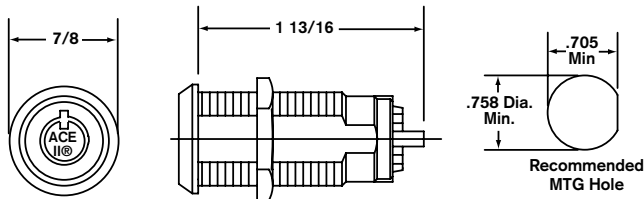
SINGLE POLE, SINGLE THROW



Patented Ace II® Lock Assembly.

- Maintaining contact switch operated by manually rotating inserted key 90° clockwise from open to closed position.
- Momentary contact switch locks feature spring return from closed to open position after 90° clockwise key rotation to closed position.
- Contact configuration: SPST
- 7 amps (resistive) @ 125 Volts A.C.
7 amps @ 28 Volts D.C.
- Electrical Life: 6,000 cycles @ Max. Load.
- Contact Resistance: 50 milli ohms initial maximum.
- Standard finish — Bright Chrome.
- Two keys are furnished per lock.
- Master - Keying not available.

NO. C4073 SERIES



(Standard Package of 10)

C4073-1DC, C4073-70DC
Available KD, KA to PL927.

C4073-2DC Available KD, KA to
PL910.

| Lock No. | Keypull | Contact | KD | See Below | KA #PL925 | KA #PL926 | KA #PL927 | KA #PL454 | KA PL #435 |
|------------|----------|-------------|-------|--------------------|-----------|-----------|-----------|-----------|------------|
| C4073-1DC | OFF Only | Maintaining | 99501 | KA #PL573 99502 | 99503 | 99504 | 99505 | 99506 | 99507 |
| C4073-2DC | OFF & ON | Maintaining | 99231 | KA #PL910 99232 | 99233 | 99514 | 99515 | 99239 | 99516 |
| C4073-70DC | OFF Only | Momentary | 99521 | KA #PL928 99522 | 99523 | 99524 | 99525 | 99526 | 99527 |

Warning: Improper connection to circuitry may result in shock. Since Chicago Lock does not control the use of its products, external wiring, switch lock selection, and/or use is not the responsibility of Chicago Lock Company.

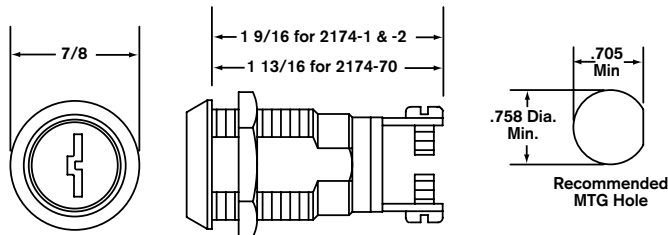
SINGLE POLE, SINGLE THROW



Double Bitted Assembly With Eleven Criss-Cross Blade Tumblers.

- Lock operation same as 4073 Series.
- Contact configuration: SPST
- 7 amps (resistive) @ 125 Volts A.C.
7 amps @ 28 Volts D.C.
- Electrical Life: 6,000 cycles @ Max. Load.
- Contact Resistance: 50 milli ohms initial maximum.
- Standard Finish — Bright Chrome.
- Two keys furnished per lock.
- Master - Keying not available.

NO. C2174 SERIES



(Standard Package of 10)

C2174-1DC, Available KD, KA to
2001, 2007.

C2174-2DC, Available KD, KA to
2001, 2007, 2387.

C2174-70DC, Available KD,
KA to 2001, 2007, 2126.

| Lock No. | Keypull | Contact | KD | KA #2001 | KA #2007 | KA #2126 | KA #2387 | KA #2507 | KA #2553 |
|------------|----------|-------------|-------|----------|----------|----------|----------|----------|----------|
| C2174-1DC | OFF Only | Maintaining | 99151 | 99152 | 99153 | 99150 | 99154 | 99155 | 99156 |
| C2174-2DC | OFF & ON | Maintaining | 99161 | 99162 | 99163 | 99160 | 99164 | 99165 | 99166 |
| C2174-70DC | OFF Only | Momentary | 99181 | 99182 | 99183 | 99184 | 99185 | 99180 | 99186 |

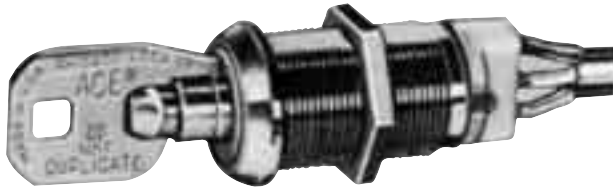
Warning: Improper connection to circuitry may result in shock. Since Chicago Lock does not control the use of its products, external wiring, switch lock selection, and/or use is not the responsibility of Chicago Lock Company.

All part numbers shown in red are available through the STOCK LOCKS program.

SWITCH LOCKS

SINGLE POLE, DOUBLE THROW

**STOCK
LOCKS**



NO. C4235 SERIES



NO. C3535 SERIES

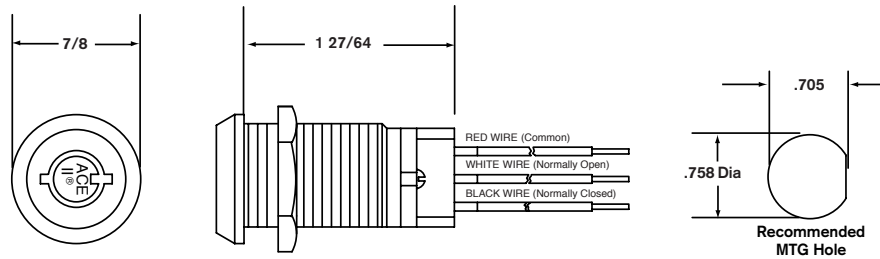
4235 Series:
Patented Ace II® Lock Assembly.

3535 Series:
Double Bitted Assembly With Eleven Criss-Cross Blade Tumblers.

These features apply to both switch locks:

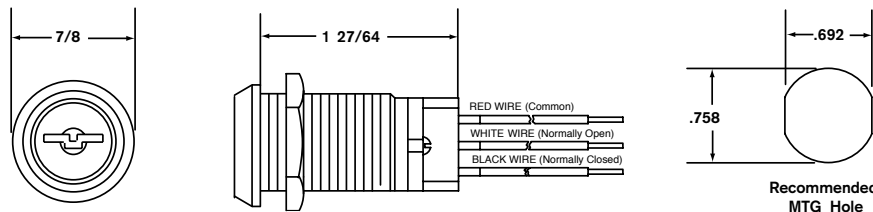
- 7 amps resistive/4 amps inductive @ 115 VAC or 28 VDC.
- Reliable snap action switch provides many thousands of electrical contacts without failure.
- Terminals designed to accept "AMP" .058 pin receptacles.
- Standard finish — Bright Chrome.
- Furnished with 10 inch, 20 gage stranded wire.
- Two keys furnished per lock.
- Master - Keying not available.
- Maintaining only.
- Switches are U.L. & CSA listed.

Contact factory for additional specifications.



Ace II® Switch Locks — SPDT (Standard Package of 10)

| Lock No. | Keypull | Rotation | KD | KA #CLC705 | K #CLC706 |
|-----------------|-------------|----------|-------|------------|-----------|
| C4235-DC | 2 positions | 180° CW | 99481 | 99482 | NA |
| 4235BDC | 1 position | 165° CW | 99491 | NA | 99492 |



Double Bitted Switch Locks — SPDT (Standard Package of 10)

| Lock No. | Keypull | Rotation | KD | KA #2382 | KA #2387 |
|------------------|-------------|----------|-------|----------|----------|
| 3535DDC | 2 positions | 180° CW | 99411 | NA | 99412 |
| C3535-BDC | 1 position | 165° CW | 99421 | 99422 | NA |

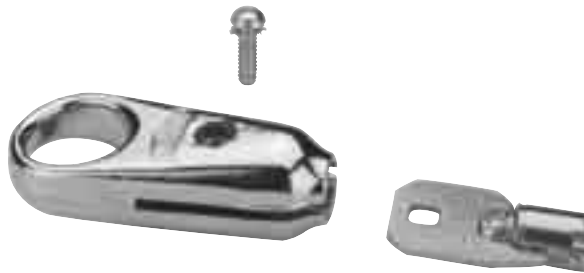
Warning: Improper connection to circuitry may result in shock. Since Chicago Lock does not control the use of its products, external wiring, switch lock selection, and/or use is not the responsibility of Chicago Lock Company.

All part numbers shown in red are available through the STOCK LOCKS program.

KEY HOLDER / SPECIAL PURPOSE LOCKS

**STOCK
LOCKS**

ACE® KEY HOLDER D2905*



NO. D2905

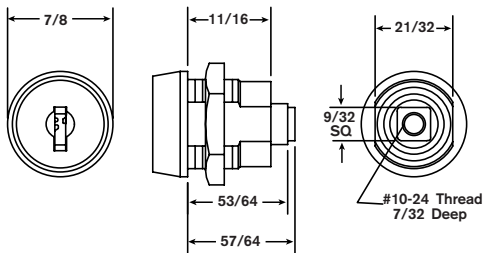
*** PRODUCT WILL BE DISCONTINUED
ONCE INVENTORY IS DEPLETED ***

For A Better Grip.

- Large, "user friendly" ACE® Key Holder allows better grip and overall control of key.
- Fasten any ACE® Key to holder with 8-32 sems screw (included with holder.)
(Standard package of 1 per bag)

DRAWER & DOOR

- Six disc tumbler plug in 3/4" diameter.
- Die cast barrel with two flats — 21/32" across.
- Key and cam rotation 90° from locked (12 O'Clock) to unlocked (3 O'Clock) position with keypull in both positions.
- This lock designed to be used with customer's latching mechanism.
- Standard finish — Satin Nickel.
- Two keys furnished per lock.



NO. C17256TNH

| Lock No. | KD | KA #1101X |
|------------------|-------|-----------|
| C17256TNH | 99061 | 99062 |

(Standard Package of 25)

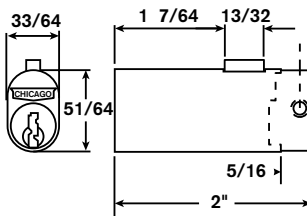
FILING CABINET

NO. CEXP-19DC

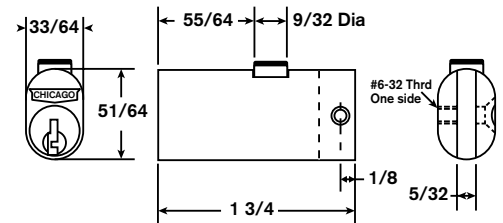


NO. C5001LP

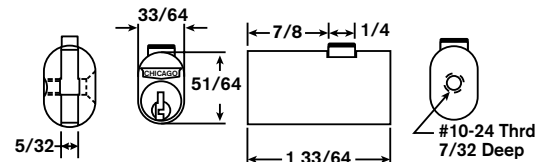
- Four pin tumbler plug.
- Die cast barrel with die cast bolt.
- No. 5002LP has rectangular bolt.
- Other models have round bolt.
- Standard finish — Satin Chrome.
- Two keys furnished per lock.



NO. 5002-LP



NO. 5001-LP



NO. EXP-19DC

(Standard Package of 10)

| Lock No. | "A" Dim. | "Bolt" Dim. | "D" Dim. | "O.A." Dim. | "W" Dim. | KD | KA #1X20 | KA #3X5 | KA #2X01 | KA #2X02 | KA #5X75 |
|------------------|----------|----------------|----------|-------------|----------|-------|----------|---------|----------|----------|----------|
| C5001LP | 55/64" | 9/32" dia. | 5/16" | 1 3/4" | 5/32" | 99311 | 99312 | 99313 | 99314 | 99315 | NA |
| C5002LP* | 17/64" | 27/64" x 9/64" | 5/16" | 2" | 5/32" | 99331 | 99332 | 99333 | 99334 | 99335 | NA |
| CEXP-19DC | 7/8" | 1/4" dia. | NA | 1 33/64" | NA | 99531 | NA | NA | NA | NA | 99532 |

C5001LP and C5002LP Available KD, KA to 1X03, 1X04, 1X20, 3X5, 2X01, 2X02. CEXP-19DC, Available KD and KA only to 5X75.

***To order replacement locks for Steelcase equipment, specify 5002LP, KA# CL-S100. Item #99620.**

Steelcase is a registered trademark of Steelcase, Inc., Grand Rapids, Michigan.

All part numbers shown in red are available through the STOCK LOCKS program.



NOTES:

ACE KEY COVERS / WEATHER COVERS

ACE® KEY COVERS



Available in a large range of colors, these user friendly Ace II® Key Handle Covers from Chicago Lock make key management easy.

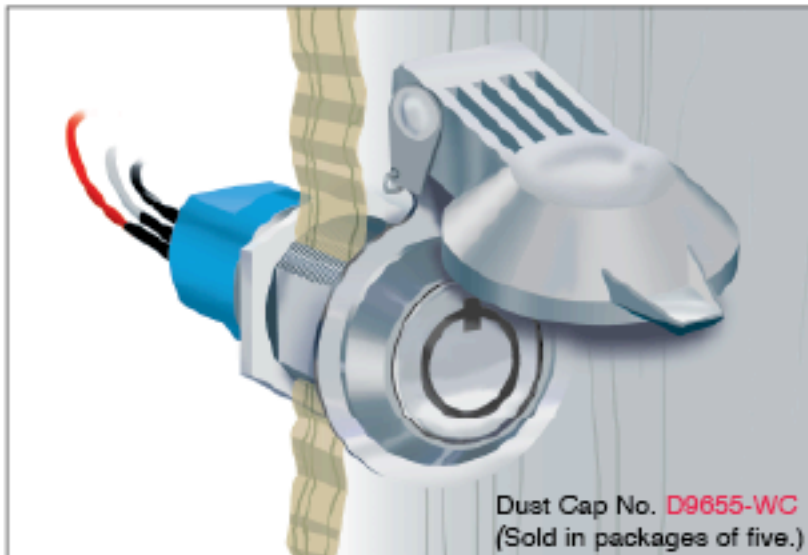
These new Key Handle Covers are made of a durable, strong plastic that press-fit any ACE II® key. We like to say they're "user friendly" because the larger size allows for better grip and overall control of the key. An easy way to "add-on" extra profit to every sale!

Product No. Specified By Color (Sold in packages of five.)

| | | |
|---|---|---|
|  Light Blue D9645 |  Yellow D9646 |  Orange D9647 |
|  Green D9648 |  White D9649 |  Blue D9650 |
|  Purple D9651 |  Tan D9652 |  Rust D9653 |
|  Brown D9654 | | |

**STOCK
LOCKS**

WEATHER COVERS

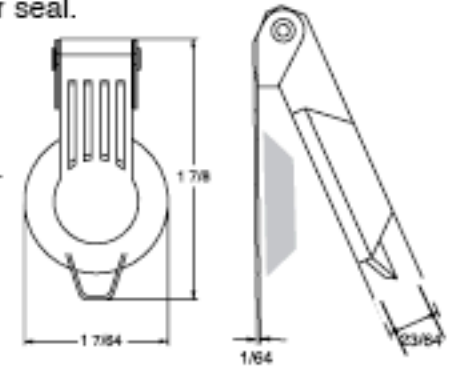


Protect Switch Locks and Cam Locks from the elements with this economical, easy to install weather cover.

Quality construction includes:

- Chrome plated zinc die cast cover.
- Stainless Steel mounting ring.
- Permanently installed rubber seal.
- Positive spring closure to insure seal integrity.

Competitively priced, and in stock for immediate shipment.



CompX[®]
SECURITY PRODUCTS



MAIN OFFICE - FACTORY

PO Box 200

Mauldin, SC 29662

PH: 864-297-6655 FAX: 864-297-9987

compX.com

WESTERN DISTRIBUTION CENTER

9370 Buffalo Avenue, Unit 104

Rancho Cucamonga, CA 91730

PH: 909-476-7933 FAX: 909-476-8553



Reorder #: F2644-002

October 2006

Printed in U.S.A.

COMPX NATIONAL
REGISTERED TO ISO 9001
CERTIFICATE NO. A 2695