

# Alarm Lock: Advanced access & egress solutions



**ALARM LOCK**

2007 – 2008



## Table of Contents

Trilogy T2 Electronic Cylindrical Digital Locks .. Page 2	A Series Keypads ..... Page 11
• DL2700 Series Standalone Digital Locks	• A-100 Indoor single gang box mount keypad
Trilogy Audit Trail Pushbutton Locks..... Page 3	• A-100WP Outdoor sealed environment keypad
• Trilogy DL5300 Double-sided Trilogy for keypad PIN-code access on two sides of door	• A-100IMWP Outdoor illuminated mullion keypad
• Trilogy DL2800, Trilogy DL3000 DL3000 Electronic Cylindrical Digital Locks w/Audit Trail	Advanced Door Alarms..... Page 12
Trilogy Durability With Prox Capabilities ..... Page 4	• PG21MS/MB Door Alarms
• PDL3000 Series – Electronic Locking/Prox Systems	• PG30 Door Alarm
• PDL5300 Dual-sided PIN pushbutton lock	• PG10
• PL3000 Prox Only Cylindrical	• LL1 Door Alarms
• Trilogy Online Seminar	Alarm Lock Panic Exit Alarms ..... Page 13
Trilogy DL4100/4500 Series Locks ..... Page 5	• Model 715 Delayed Egress
• DL4100, DL4500, PDL4500, DL3500, PDL3500 Series Privacy/Lock-out Lock	• Sirenlock Models 250 & 260
Mortise Locks ..... Page 6	• Models 700 & 710 and Waterproof Models
• US Mortise Lock	Remote Release Mags, Powermags & RTEs .. Page 14
• European Mortise Lock	• Remote Release PowerMag Kit RR-PM1200PAK
Audit trail accessories, ordering information ... Page 7	• PowerMag Electromagnetic Locks
Trilogy Narrow Stile Locks..... Page 8	• PowerExit Request-To-Exit Push Buttons
• DL/PDL1200, 1300 Series	• Electric Door Locks Models 103/104RA
TrilogyExit Adds Audit Trail To Panic Exits ..... Page 9	Essential Add-ons And Extras ..... Page 15
• Trilogy Panic Exit With Audit Trail	• Strikes for Model 11A, Narrow Stile Mounting Bar, Rim Cylinder, Finger Pull, Battery Eliminator, Double Door Holder, Armored Door Loop, Single Door Strike, Double Door Strike, Outside Access Door Pull
Trilogy Digital & Prox Access Keypads .....Page 10	Alarm Lock Power Supplies ..... Page 16-17
• DK/PDK3000 Digital Keypad	Trilogy Family of Products Chart ..... Page 18-19
	HIPAA Solutions..... Page 20

access &  
egress  
solutions



# Trilogy:®



hospital



retail



airport



schools



pharmacy



office



**DL2700** Our most popular digital lock



**DL2800** Economical audit trail lock



**DL3000** Advanced audit trail lock



**DL4100** PIN or PIN/prox privacy-button lock



**PDL3000** PIN/prox lock with audit trail



**PL3000** Prox-only vandal proof lock



**DL3500, PDL3500** Mortise PIN or PIN/prox locks



**DL1200, DL1300, PDL1300** Narrow stile PIN/prox locks



**ETDL, ETPDL** Retrofits with existing panic exit trim - most major brands. Automatically dog-down exit doors on real time schedule. Adds audit trail, too.



**DK3000 & PDK3000** PIN, PIN/prox 12V/24V AC/DC weatherproof keypads

Keyless access locks trusted by more leading retailers, firms, hospitals, schools & airports

Add dependable wireless access control a door at a time with field-proven Trilogy® electronic standalone locks. Fingertip or PC programmable, Trilogys support up to 2000 PIN codes or use standard HID Prox ID cards/fobs. Multi-level user hierarchy includes one-time service codes, group or total lock-out codes and easy passage. Offer time-/date-stamped reports of door usage by user and print them from a PC or wireless

handheld printer, making Trilogy ideal for HIPAA-compliant access control for securing private health records. With automatic lock/unlock schedules Trilogy saves manpower costs. Grade 1 durability, weatherproof, and in coming in five architectural finishes, there's a Trilogy for every application.

# Trilogy T2: Electronic cylindrical digital locks



## Trilogy® T2 standalone digital cylindrical lock

### DL2700 Series

Our most popular lock - now with more codes & power!

- More codes: up to 100 3-5 digit codes: 1 master, 10 managers, 90 basic users, 3 one-time service codes
- 5AA battery operated; 150,000 cycles, typ.
- For outdoors, specify **WP** weatherproof models -31° to +151°F (-35° to +66°C)

## Field-proven Trilogy® electronic standalone pushbutton locks available in cylindrical, mortise and trim models to retrofit with panic exit bars or narrow stile aluminum/glass doors' latch locks

### All Trilogys feature:

- In an hour, add dependable wireless access control, one door at a time—easily retrofit standard knobssets
- Support 100 to 2000 PIN codes (3-5 or 6 digits); some with built-in HID prox readers for use with access ID cards/fobs
- Multi-level user codes & one-time service codes. Free passage, group- or total lock-out modes, too
- All are fingertip programmable at vandalproof all-metal keypad
- PC programmable models also feature printable audit trail, auto-lock/unlock scheduling saving guard/manpower costs
- Long-life battery operation (cylindrical models use 5AA off-the-shelf batteries); low battery alert
- Key override, standard core (supplied) or interchangeable core prep
- Non-handed cylindrical models
- Programmable relay functions
- Durable BHMA Grade 1 Lockset
- Weatherproof models -31° to +151°F (-35° to +66°C)
- Curved Regal handle option
- 5 Architectural finishes (US3 polished brass, 26 polished chrome, 26D satin chrome, 5 antique brass, 10B duronodic)



ADA-compliant levers



Curved regal handle option for all Trilogys



Lever sets feature clutch mechanism ensuring longer life and complies with ADA specs providing barrier-free access to the disabled.



# Trilogy T3: Choice of audit trail pushbutton locks

Double-sided Trilogy for keypad PIN-code access on two sides of door

## DL5300

- 2000 users may be granted direction-specific access (ie., each code can be programmed to only allow access to go into an area, out of an area, or all ways)
- Easy independent programming of direction through the door by code (ie., inside to outside, outside to inside or both)
- Time-date-stamped 40,000 event audit trail also indicates direction of door usage
- Data port for programming lock and querying audit trail is on primary side of door, along with functioning mechanical key override
- Mirror image on 2nd side, where key unlocks battery chamber



## T3 advanced digital lock with audit trail

### DL3200 Series

#### High Capacity Audit Trail Lock

New, enhanced version of the original DL3000

- 2000 user codes (3-6 digits)
- Multilevel security - Master; manager; supervisor; basic users
- Program at keypad or with PC-and/or data-transfer module
- 40,000 event audit trail logs with time-/date-stamp of access by user; create PC reports or at hand-held wireless printer
- 150 scheduled lock/unlock events
- Quick passage mode (without being in program mode)
- Weatherproof -31o to +151oF (-35° to +66°C)
- 5AA Battery operated; 80,000 cycles, typ.

### DL3000

Original Audit Trail Trilogy, similar to above

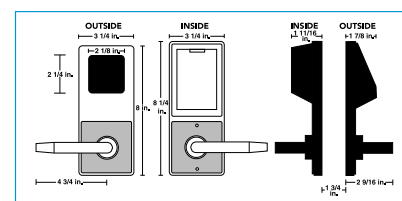
- 300 multilevel user codes; 1600 event log

## Trilogy economical audit trail lock

### DL2800

#### Cylindrical Lock

- 1000 event audit trail log, time-stamped by day, date, time and user
- 150 scheduled automatic lock/unlock events, etc.
- 200 user codes: Master, manager, supervisor and basic users. Also one-time service code (3-6 digits)
- Weatherproof -31° to +151°F (-35° to +66°C)
- Relay may be programmed to energize on one or more selected events
- 5AA Battery operated; 80,000 cycles, typ.



Trilogy cylindrical locks retrofit standard knobsets simply, in about an hour

# Prox capabilities: with Trilogy durability



## Trilogy prox lock with audit trail

### PDL3000

#### PIN/Prox Cylindrical

- 2000 user codes (3-6 digits) and/or accepts HID prox cards and keyfobs
- Multilevel security - Master; manager; supervisor; basic users
- Easy Tap & Add batch ID card enrollment mode allows many cards to be quickly added without PC –also- downloadable from PC or enroller tool
- 40,000 event audit trail log
- 150 scheduled events
- PC programming/reporting
- Quick passage mode (without being in program mode)
- Weatherproof -31° to +151°F (-35° to +66°C)
- 5AA Battery operated; 60,000 cycles, typ.

**PDL3000K** – Model also logs mechanical key override use

## New! Dual-sided PIN/Prox lock

### PDL5300

Similar to PDL3000 above, but with PIN keypad and prox reader on both sides of door

- 2000 PIN code and/or HID Prox card/fob users may be granted direction-specific access (ie., each user can be programmed to only allow access to go into an area, out of an area, or all ways)
- Easy independent programming of direction through the door by code/card (ie., inside to outside, outside to inside or both)

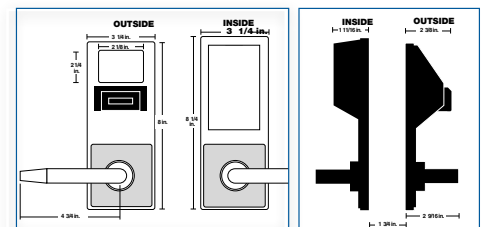
- Time-date-stamped 40,000 event audit trail also indicates direction of door usage
- Data port for programming lock and querying audit trail is on primary side of door, along with functioning mechanical key override
- Mirror-image secondary side of lock, identically matches the keypad/prox-controlled lock on the primary side for greatest aesthetics, and even has same cylinder (i.e., IC core prep or standard). However, on secondary side of door, key in cylinder of lock only controls access to the lock batteries, offering an extra level of tamper-proof protection (as key is required).

## Trilogy prox only for superior vandal resistance

### PL3000

#### Prox Cylindrical

- Keypad-less version of above for ultimate vandal-proofness in harshest environments
- Accepts HID prox cards and keyfobs for access
- Easy Tap & Add batch ID card enrollment mode allows many cards to be quickly added without PC –also- downloadable from PC or enroller tool
- 40,000 event audit trail log, 150 scheduled events
- PC programming/reporting



# Trilogy 4100/4500: Privacy & lock-down features



Standard Cylindrical Model with privacy button (center, top) featured



Flashing LED outside indicates the room is occupied or locked



Also available in mortise model

## Trilogy® locks with privacy/lock down pushbutton on inner door (mortise & cylindrical pin or pin/prox models)

### DL4100 and Prox PDL4100

#### Similar to the DL3200 features plus:

- 2000 PIN or PIN/Prox user codes; 500 scheduled events; 40,000 audit trail
- Privacy Pushbutton – Push button on inside door to temporarily lock-out keypad codes (programmable option)
- Occupied and multi-status LED indicator, flashes when privacy session is active
- Self-stick instructional signage, supplied (bilingual)
- Keypad or PC programming/reporting
- Right- or left-hand, classroom or deadbolt function models
- 1-3/8" mortise cylinder & ASA strike, matching function, supplied.
- 5AA battery-pak operated; 60,000 cycles, typ.
- 5 Architectural finishes (US3 polished brass, 26 polished chrome, 26D satin chrome, 5 antique brass, 10B duronodic)
- Weatherproof -31° to +151°F (-35° to +66°C)

Mortise DL4500 and Prox Mortise PDL4500 also available

## School Lock-Down Applications – remain safely inside until the coast is clear – no need to open the door

At the first sign of trouble outside, with just one button and virtually no special training or knowledge required, faculty and/or students of all ages can simply press Trilogy's inside 'privacy' button to lock out unauthorized access, instantly locking-down a classroom or area, all while remaining safely within the room. There is no need to open the door, nor use a special key, since the fingertip-activated button is located on the inside door, i.e., the same side as classroom occupants. Trilogy's lockdown function automatically disables free passage through the door and even locks out general PIN user codes, since routine Trilogy keypad access is temporarily suspended whenever the privacy button is activated (even when the lock is time-scheduled for free-access mode).



Instantly, a *lock-down override code*, however, will reactivate the pushbutton keypad and enable authorized teachers/staff, outside the classroom, to readily bypass the lockout function at any time, should students, etc. accidentally or purposefully activate lockdown mode. (In fact, all master and management codes (11) will permit instant access to the Trilogy protected area.)



# Trilogy Mortise: high security digital locks



## Trilogy® high security mortise locks with and without prox

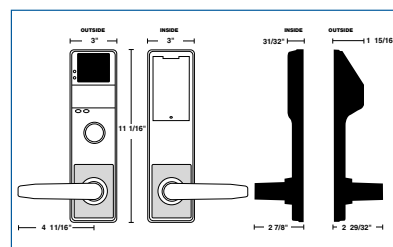
### DL3500 Series Mortise Locks

- 300 User codes: Master, manager, supervisor & basic users
- Fingertip or Windows PC-programmable
- Real time clock enables up to 500 scheduled events and holiday schedules
- 40,000 Event audit trail provides a printed time/date- stamped log of all electronic activity
- Long-life battery pak for 80,000 cycles, typ. and low-battery alert
- Choose either classroom or deadbolt versions and left or right handing (If reverse hand is required, lock is field reversible.)
- 1 3/8" (3.5 cm) mortise cylinder supplied card enrollment mode allows many cards to be quickly added without PC –also– downloadable from PC or prox enroller tool
- 40,000 event audit trail log
- 500 scheduled events, e.g., lock or unlock
- PC programming/reporting
- Quick passage mode (without being in program mode)
- Program data transferred to lock via AL-PCI2 or AL-DTMIII
- 5AA battery-pak operated; 75,000 cycles, typ.
- 5 Architectural finishes
- Weatherproof -31° to +151°F (-35° to +66°C)

### PDL3500 Series

**PDL3500 Series mortise lock with built in HID prox reader, similar to DL3500 Series, but with:**

- 2000 user codes (3-6 digits) and/or HID prox cards/fobs
- Multilevel security - Master; manager; supervisor; basic users
- Easy Tap & Add batch prox ID card enrollment mode allows many cards to be quickly added without PC –also– downloadable from PC or prox enroller tool
- PC programming/reporting
- Quick passage mode (without being in program mode)
- Program data transferred to lock via AL-PCI2 or AL-DTMIII
- 5AA battery-pak operated; 75,000 cycles, typ.
- 5 Architectural finishes
- Weatherproof -31° to +151°F (-35° to +66°C)



Cylindrical Models DL4100 and Prox/PIN Lock PDL4100 Versions also available



European handled versions



## Choice of five Trilogy finishes



## Trilogy audit trail lock accessories

### AL-IR1 Infrared Printer

- Prints the event log and user code with hand-held convenience.

### AL-DTMIII Data Transfer Module

- Module used to transfer program data from the PC to the lock and receive Audit Trail from the lock. Can transfer program data for up to 200 locks.

### AL-PRE

- Alarm Lock Prox Reader/Enroller (For Use With Prox Lock) Prox Card Reader/Enroller Enables instant, automatic enrollment of Prox Cards into DL-Windows (just tap the Prox Card/fob device to the unit's faceplate to enroll)! Supports all prox cards and prox keyfobs. Simultaneous card enrollment, downloading or lock polling – all on just one serial port. Replaces AL-PCI. 9V Battery operation (6 mos. to 1 year, typical).

### DL-WINDOWS SOFTWARE

- Windows-format software used to create programming, manager, users and schedules, receive audit trail from lock, program the lock using PC or laptop, program the AL-DTMIII to program multiple locks and configure the AL-DTMIII to transfer data.

### AL-PCI2 (not shown)

- Interface cable interconnects lock and PC for data transfer. (AL-PCI also includes DL-WINDOWS CD)

### AL-PCI2U, as above, with USB interface cable

## Free online Trilogy seminar

Available at [www.alarmlock.com](http://www.alarmlock.com)  
Learn to earn on your own schedule at your pace

Trilogy 101 is also available on CD from your Alarm Lock distributor or sales rep.

## Trilogy ordering information

### Cylindrical Trilogys

**DL 27 00 WP IC /26D -Y**

#### Model / Series:

DL27 = DL2700 Series  
DL28 = DL2800 Series  
DL30 = DL3000 Series  
DL32 = DL3200 Series  
DL53 = DL5300 Series  
PDL30 = PDL3000 Series  
PDL53 = PDL5300 Series

#### Trim:

00 = Lever  
50 = Knob (only for DL2700 series)  
75 = Regal Curved Lever

#### Exterior/Interior Use:

For Exterior use of DL2700 & DL3000 only, order **WP** for weatherproof use. All other models are weatherproof as standard.

#### Cylinder:

IC = Standard Interchangeable Core Prep for Best, Falcon, Arrow, KSP  
(Note: No "IC" indicates standard K.O. cylinder.)

#### Finish:

/3 = US3 Polished Brass  
/26 = US26 Polished Chrome  
/26D = US26D Satin Chrome  
/5 = US5 Antique Brass  
/10B = Duronodic (Special Order)

#### Special Order IC Prep:

-Y = Yale  
-M = Medeco  
-R = Sargent  
-C = Corbin/Russwin  
-S = Schlage

### Mortise Trilogys

**DL 35 00 DB R /26D EX**

#### Model & Series:

DL35 = Trilogy T3 Mortise Series

#### Trim:

00 = Standard Lever  
75 = Regal Curved Lever (U.S. Option Only)

#### Lock Body:

DB = Dead Bolt  
CR = Class Room (U.S. Only)

#### Handing:

Your Door -	Order -
Left Handed	L
Right Handed	R
Left Hand Reverse Bevel	R
Right Hand Reverse Bevel	L

#### Finish:

/3 = US3 Polished Brass  
/26 = US26 Polished Chrome  
/26D = US26D Satin Chrome  
/5 = US5 Antique Brass  
/10B = Duronodic

#### European Model Suffix

Not Used For U.S. Models

\*Note: Standard Lever for U.S. Models is Straight Lever. Standard Lever for European Models is Curved Tubular Lever

(Note: Trim is non-handed. Lock body is field reversible.)

### Trilogy Narrow Stile

**DL1200/26D1**

#### Model Type

PDL – Prox/PIN  
DL – Digital PIN

#### Trilogy Series

12 – 2700 Series  
13 – 3000 Series

#### Trim

00 = Lever  
25 = Turnpiece  
50 = Knob  
75 = Regal lever

#### Finish

/26D Satin Chrome  
/10B Duronodic  
/MS Metallic Silver  
/MB Metallic Bronze

#### Mechanical Dead Latch

- Supports Adams Rite: 4710, 4730, 4900 Series
- Supports Adams Rite: 4070, MS1850S, MS1850S-050, MS1950, MS1950-050
- KIT Includes Adams Rite 4900 with 1-1/8" backset, 628 & 313 faceplate
- KIT Includes Adams Rite 4900 with 1-1/2" backset, 628 & 313 faceplate

### Trilogy Exit

**ETPDL- O R/ 26D V99**

#### TYPE:

PDL = Digital with Prox  
PL = Prox Only  
DL = No Prox

#### DOOR THICKNESS:

0 = 1 3/4" +/- 1/8"  
1 = 2" +/- 1/8"  
2 = 2 1/4" +/- 1/8"  
3 = 2 1/2" +/- 1/8"

#### HANDLE:

R = Regal  
S = Straight

#### Finish:

26D = US26D Satin Chrome  
10B = Duronodic  
26 = US26 Polished Chrome  
3 = US3 Polished Brass

#### OEM TRIM

V99 = Von Duprin 99  
C50 = Corbin ED5000 & Yale  
D93 = Dorma 9300  
A38 = Arrow 3800  
S88 = Old Style Sargent  
N58 = New Style Sargent  
P11 = Precision 1100  
CR8 = Cal Royal 9800

# Trilogy Narrow Stile: aluminum door retrofit

Now get convenient keyless PIN code or Prox access anywhere there's a glass door.

Trilogy Narrow Stile lever models (left and right) designed to work with Adams Rite® latch series; Thumbturn models (shown at center) support swing & hook bolt products .

Plus, PC-programmable 1300 Series models provide audit trail log of door users.



## Pushbutton aluminum door trim retrofit glass doors with latch locks

### DL1200, DL1300

- Aluminum door retrofit outside trim for Adams Rite® 1850, 1950, 4710, 4070, 4730, 4900 Series and MS1850S and MS1950S Series latch locks
- Add keyless convenience to mechanical latch locks from Trilogy's all-metal, vandal-resistant 12-button keypad and/or automatic timed-scheduled locking/unlocking and audit trail with 1300 Series
- DL1200 supports 100 3-6 digit PIN user codes , fingertip programmable
- DL1300 (and Prox PDL1300, right) support 2000 users, PC programming/reporting and features 40,000 event audit trail by user and 500 event schedule/real time clock (e.g. lock/unlock by time)
- Weatherproof -31° to +151°F (-35° to +66°C)
- Long-life, battery- operated for 100,000 and 80,000 cycles respectively, typ.on 2 lithium 3V batteries, supplied; low battery alert
- Compact styling 14-3/8" H x 1-5/8" D x 1-3/4" W
- Key override mortise cylinder, 1-1/4" supplied. (Supports 1-1/8", 1-1/4" and 1-3/8"). Also interchangeable cores supported (Corbin/Russwin, Yale, Schlage, Medeco.)
- Backsets 31/32", 1-1/8" and 1-1/2" ; Stile thickness 1-3/4"
- Non-handed; fully field-reversible
- Four finishes US26D satin chrome, US10B duronodic, MS metallic silver and MB metallic bronze

## Narrow stile Prox/PIN PC-programmable model with audit trail

### PDL1300

Includes all of the 1300 Series features, at left:

- Built-in prox reader, supports up to 2000 users with HID Prox ID cards or /fobs or 3-6 digit PIN codes
- Easy Tap & Add batch prox ID card enrollment mode allows many cards to be quickly added without PC –also– downloadable from PC or prox enroller tool
- 40,000 event time-/date-stamped audit trail by user
- 500 event schedule/real time clock (e.g. lock/unlock by time)
- Long-life, battery-operated for 65,000 cycles, typ. on 2 lithium 3V batteries, supplied; low battery alert



# TrilogyExit: Add audit trail to panic exits

Add Trilogy convenience, programming, flexibility and audit trail to panic exit devices from most major manufacturers



## OUTSIDE:

Rugged, field-proven  
Trilogy digital lock.

## INSIDE:

Existing panic exit  
device – Most major  
brands supported

Add Trilogy convenience, programming, flexibility and audit trail to panic exit devices from most major manufacturers

### TrilogyExit

- Clutch Mechanism insures long life and durability
- Fingertip and/or Windows Programmable
- 2000 User Codes: Master, manager, supervisor and users
- Real Time Clock for up to 40,000 Event Time/Date-Stamped Audit Trail
- Up to 500 Lock/Unlock Schedules (with Time Zone Support)
- Rugged 12-Button Metal Keypad
- Non-Handed; Fully Field Reversible
- Adaptable to most major manufacturers of standard RIM and IC RIM Cylinders
- Battery operated; uses 5 AA batteries

Also available in prox model for added convenience and security.

Includes all of the features above plus:

- Accepts most HID Proximity cards and keyfobs
- Users are individually programmed to use a card only, code only, or for highest security – both card and code
- Prox card data can be added to software by uploading from lock, by using AL-PRE or entering directly from computer using DL-WINDOWS software.

Also available in prox only model (ETPL)



# Access keypads: 12V/24V with Trilogy features



## Trilogy® weatherproof 12/24VAC/DC digital access keypads with PC programming & audit trail

### Trilogy DK3000

- 2000 PIN user codes, multilevel security
- Ideal for use with 12V or 24V (AC or DC) electric door strikes, mag locks or Alarm Lock Remote Release Mag Lock Kit (adjacent page)
- Wall mount or single gang box
- 2 High-Current Rated 8A Relays for entry, alarm zone shunting or lock release by real-time schedule
- Vandal-resistant, all metal 12-button keypad
- Keypad or PC programmable
- 40,000 Event audit trail report/print to PC or hand held printer or DTMIII Data Module
- Timed Egress Input – Selectable door open times 5, 10 or 15 seconds
- 500 Scheduled events & real time clock
- Tamper supervised (reportable to alarm system)
- Remote release feature; request-to-exit input
- Weatherproof -31° to 151°F (-35° to +66°C)

## Digital access keypad with prox reader

### Trilogy PDK3000

Same features as DK3000 above, plus

- Built-in HID proximity reader
- Accepts up to 2000 PIN codes and/or HID cards and keyfobs

# A Series Keypads: Single point access control



Alarm Lock A-Series family of 12/24VAC/DC keypads is designed to control access of a single entry point for facilities with up to 150 users. Three rugged stainless steel models are available to meet most residential and commercial environments. Each user is assigned personal identification number from three to six digits long. Audible feedback verifies each key press and all programming is easily accomplished from the keypad, eliminating the need for additional software packages. The non-volatile EEPROM memory retains all programmed entry codes. Outputs #1 and #2 are Form C relay contacts, while output #3 is an open collector transistor. Authorized door open time can be programmed for any duration from 1 to 99 seconds.

## Indoor single gang box mount keypad

### A-100

- Stainless steel faceplate
- Mounts on a single-gang box
- 150 3 to 6 digit user codes
- Keypad programmable
- Selectable audible keypad feedback
- Operates up to three outputs (2 relays & 1 open-collector) and can be used to trigger a door strike, an electromagnetic door lock, or any other relay-activated device.

## Outdoor sealed environment keypad

### A-100WP

- Weatherproof, sealed electronics for -13°F to 131°F (-25° to 55°C)
- Metal keypad buttons with Braille markings
- Vandal resistant
- 150 3 to 6 digit user codes
- Keypad programmable
- Selectable audible keypad feedback
- Operates up to three outputs (2 relays & 1 open-collector) and can be used to trigger a door strike, an electromagnetic door lock, or any other relay-activated device.

## Outdoor illuminated mullion keypad

### A-100IMWP

- Mullion, narrow stile surface mounting
- Illuminated numerals on keypad (amber)
- 150 3 to 6 digit user codes
- Weatherproof -13°F to 131°F (-25° to 55°C)
- Keypad programmable
- Selectable audible keypad feedback
- Operates up to three outputs (2 relays & 1 open-collector) and can be used to trigger a door strike, an electromagnetic door lock, or any other relay-activated device.

# Door alarms: Advanced and multi-purpose

The PG21MS Series includes advanced narrow-stile microprocessor-controlled door alarms for surface mounting on a door or door frame. Typical applications include emergency fire escape doors, nursing home stairwell doors, rear restaurant and theater doors.

- Two selectable arming modes –
  1. **Always armed mode** – when key is turned counter clockwise to the disarm position, the key cannot be removed. To remove key, turn back to arm mode, thus keeping unit armed always.
  2. **Standard arming mode** – when key is inserted turning counter clockwise will disarm and key can be removed. Turning key clockwise will arm and key can be removed.
- Max-Flex Terminals, allowing for any or all of the following:
  - Continuous power with the addition of an external power supply
  - Multiple door monitoring permitted with built-in external reed switches
  - Status Indicator – The LED will indicate RED when armed.
  - Entry Delay Time Options – include 15 seconds, 1 minute 15 seconds & 3 minutes 15 seconds
- Sleek model design key-activated door alarm for use on standard size and narrow stile doors
- Unauthorized use of door causes alarm to sound and activates LED indicator
- Options include continuous alarm, minute shutdown with auto reset and exit/entry delay
- Uses standard mortise cylinder
- Tamper switch supervised
- For exterior key control, optional RIM cylinder may be used
- Metallic silver or duronodic finish

Optional Strobe unit (shown) – PG21MSS/PG21MBS units include a highly visible amber strobe will flash when unit goes into alarm



## Model PG30:

Keypad-controlled narrow stile door alarm, similar to PG21, plus:

- Digital codes for master, management and passage (used for auto-arming)
- 3 security levels for: a) high security b) unattended applications c) flexible control for delivery doors, etc.
- Audible low battery warning
- 3 Programmable 95db siren styles: sweep, pulsed, and steady
- Logo key is dual function test button



### PGKPD Accessory:

- For optional use with the PG30, this low-profile, brushed aluminum finished accessory provides all functions of the PG30 from the outside of the door. (Available in metallic silver only.)

## Model PG10

- The Pilfergard Model PG10 is an exit door alarm designed to deter the use of the secured door by sounding a twin action alarm when opened by unauthorized personnel. The alarm can be bypassed from inside or outside by the use of a key. (Requires standard mortise cylinder not supplied.) This durable surface mount unit is easily installed and is tamper-supervised with two separate tamper switches. Its test button verifies battery. Optional AC power supply available.

## Model LL1

- All of the features of the PG10 unit with addition of a flashing strobe for easy alarm identification.
- Choice of system controllers





# Sirenlock: Panic exit alarms

Sirenlock™ Models 250, 260, 700, and 710 are UL Listed panic alarm deadbolt devices which restrict unauthorized use of exit doors by sounding an alarm, while providing instant egress in emergencies



## Delayed egress exit alarm

### SIRENLOCK™ MODEL 715

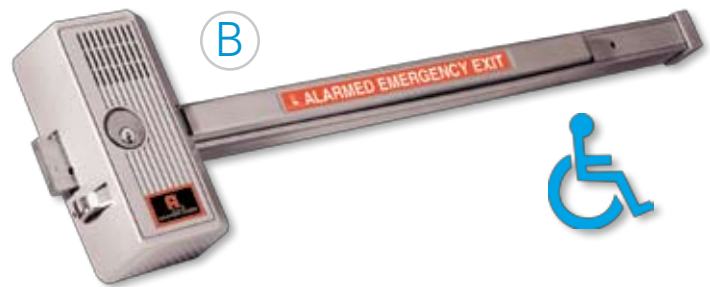
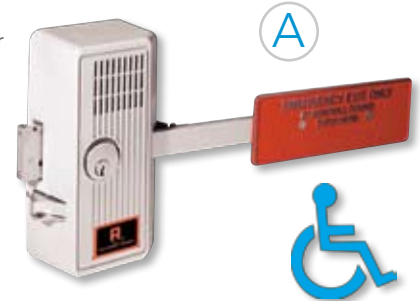
- Offers stylish, cost-effective control of unauthorized use of exit doors
- 15 second delayed egress with instant 95db Dual Piezo alarm (meets UL specifications)
- Instant alarmed exit in case of actual emergency or fire (meets NFPA 1012 Life Safety Code)
- Easy-to-install, surface mount unit in a standard panic bar deadbolt/deadlatch design
- Monitoring output for simultaneous use of CCTV camera, secondary siren, remote monitoring console, etc.
- Smoke detector input can be used to power existing system or standalone smoke detector(s) (Includes armored door cord and cables for wiring)
- 9V battery back-up powers in event of power failure

## Clapper plate & full door exit style alarms

### A – SIRENLOCK™ MODEL 250/260

### B – SIRENLOCK™ MODEL 700/710

- Deadbolt and deadlatch meet relatching requirements
- Blaring 95db dual tone siren
- Selectable 2-minute alarm or constant alarm
- 9V battery powered and audible low battery warning
- Meets or exceeds UL, CFM, ADA, NYC housing requirements
- 250/700 Models have changeable 2 minute alarm cutoff or manual reset.
- 260/710 Models have changeable 2 minute auto reset or manual reset
- Models 700 and 710 are available in 33" and 48" versions
- Model 700 is also available in red finish (700XRD)
- Non-handed surface installations on single or double doors



## New! Waterproof electronic alarmed panic locks

### 700x28WP and 250x28WP (models as above)

- Suitable for outdoor use
- Weather-resistant for exposure to rain and precipitation, even in harsh conditions
- Wide operating temperature of -20 F to +140 degrees F (-29C to +60 degrees C)
- Powered with long-life sealed 9VDC alkaline battery pack (BP9)
- Loud 99db alarm

### MODEL 11A

(Dead bolt only; Not for ADA applications)

- Model 11A is an exit lock designed to control unauthorized use of emergency doors. It provides trouble free service and deters theft from within and outside. Unauthorized use sounds alarm which can only be reset or bypassed with key. Standard features include 1 inch throw deadbolt, warning alarm, outside cylinder capability, tamper switch and long life battery pack. Available for use with double doors or for use with existing panic bars. Optional AC power supply. Requires standard RIM cylinder (not included).

# Mags: Remote release mags, powermags & RTEs

## Innovative remote release mag-kit

### KIT RR-PM1200PAK

- Advanced 1200 lb. Electromagnetic Lock with Infrared Remote Release
- The power of a mag with the convenience of pocket-size remote controls for reception or staffers
- Complete turnkey system includes: Advanced 1200 lb. Mag, one remote control, and plug-in AC transformer
- Plug-in 12VAC transformer eliminates the requirement for pulling wires or the services of an electrician (optional use)
- Supports up to 100 individual remote controls (AL-REMOTE)
- Releases mag from either side of door
- AL-REMOTE Keyfob features single button operation with positive "click" response
- Automatically-enrolled by system in easy programming mode and is audibly and visually confirmed
- UL-listed; CE-listed



## Electromagnetic locks

### PowerMag™ 12/24V

- Strong holding force of 600 and 1200 lb. models
- Perfect for both single and double doors and even sliding doors
- 5-year limited warranty
- Low voltage (12 or 24VDC); including field-selectable models
- Double door models with 1200 lb. locking per side (PM1200SLB1 and 40)

### PowerExit™ Request-to-Exit Push Buttons

- Come in five models, with or without illuminated buttons
- All models have solid aluminum anodized finish US28
- Sizes: 3' x 4 3/4" x 1/4" and 1 5/8" x 4 3/4" x 1/4"
- Back Depth: 1 1/4" and 1 7/8"
- Switch Rating: 250V AC 5A
- Momentary Action



## Electric door locks

### Models 103 & 104RA

- Models 103 & 104RA are compact electric locks simple to install on all types of doors. The door is locked or unlocked by remote switch, key switch, time programmer or other electrical contact which interrupts the power. Model 103 is our standard "fail-safe" unit which projects the bolt only while power is "on." When the power is "off" the bolt retracts. Model 104RA (reverse action) unlike our standard unit is "fail-secure" and will project the bolt only when the power is "off." When the power is "on" the bolt retracts. 24AC/DC and 12VAC/DC models available



# Alarm Lock: Essential add-ons and extras

## Strikes for model 11A:

### Model 210K

- Strike for single or double inswinging door(s) (not included with 11A)

### Model K24A

- Strike for single outswinging door (included with 11A)

### Model K28

- Strike for double outswinging doors (not included with 11A)



## Narrow stile mounting bars

### Model 99

(pair) not shown

- 3/8" x 1" anodized aluminum bar – US28 finished. For mounting Model 11A to narrow stile (glass) doors. Specify 36" or 48". (Not Shown)

## Rim cylinder

### Model CER

- Required for interior arming/disarming of models 11A, 80, 250, 260, 700, 710 & 715. Includes two keys (KA or KD)



## Mortise cylinder

### Model CEM

- Used with the Pilfergard models PG10 and PG21/E to arm and disarm the alarm circuit. Includes two keys (KA or KD)



## Cylinder finger pull

### Model 711

- An inexpensive door pull for use when outside key only access is required.



## Outside access door pull

### Model 707

- For access from building exteriors. Installed on the outside of the door and linked to the lock. After deadbolt is retracted by outside key, a slight pull will release the deadlatch and open the door. 8" x 1 1/2". (For use with all models except Model 11A).



## Battery eliminator

### Model PP100

- For use with all PG10, PG21/E, PG30, 250, 700, 80, 260, 710 and 715 models. The PP100 conserves the battery which automatically takes over as the power source to sound the alarm in the event of a power failure or intentional cut-off. A built-in circuit breaker with push-button reset eliminates troublesome fuse replacements. Includes a cam lock cylinder and 6' of armored cable adequate to provide a door loop at the hinged-side of the door. Can be used with all 6V and 9V models.



## Double door holder

### Model 44

- The Double Door Holder secures the inactive door to the frame while the active door is closed. Releasing the active door automatically allows both doors to swing freely. Reversible, right or left hand doors. Cast aluminum 8 1/2" long, 3" wide and 2 1/2" high.



## Armored door loop

### Model 271

- For use with electrified locks. An easy means for bringing electric current from the hinge side of a door frame to the door. 18" flexible armored cable. End brackets are deep drawn anodized aluminum to conceal wire connections.



## Single door strike

### Models 730 & 725

- Model 730 supplied with models 250, 700 and 80.
- Model 730M supplied with models 260 and 710 and 80.
- Model 735 supplied with model 715.



## Double door strike

### Models 732 & 735

- Model 732 for use with models 250, 700 and 80.
- Model 732M for use with models 260 and 710.
- Model 735 for use with model 715. (Not Shown)





# Alarm Lock Power: Access, burg, video & fire



## 3AMP 12/24V mag/strike/lock power supply kit

### ALP-12V3A-KIT

- 3 Amps - ideal for mags, electric strikes, etc.
- Locking Metal Enclosure
- Includes transformer & backup battery

## 1.5AMP 12/24V mag/strike/lock power supply kit

### ALP-12V1A-KIT

- 1.5Amps - ideal for mags, electric strikes, etc.
- Locking Metal Enclosure
- Includes transformer & backup battery



## AC power supplies for 4 –16 cameras

### ALP-CC24AC4UL, ALP-CC24AC8UL, ALP-CC24AC16UL

- Power supply in lockable heavy gauge metal enclosure with integral latch, transformer, on/off.
- 24 VAC individually fused outputs
- Four, eight or sixteen output configurations
- 4 amp supply current for models 24AC4 and 24AC8
- 8 amp supply current for 24AC16
- All outlets surge protected
- Input and output LED indicators
- Maintains camera synchronization

## DC power supplies for 4 or 8 cameras

### ALP-4CC615DCUL, ALP-8CC615DCUL

- Power supply in lockable heavy gauge metal enclosure with integral latch, transformer and on/off
- Input 24 VAC, 40 VA or 24 VAC, 50 VA
- Four or eight fused outputs
- Output 5.5 to 15 VDC field adjustable
- Output fuses are rated at 1.0A/250 VAC
- AC input and DC output LED indicators



ALP-CC24AC4UL



ALP-8CC615DCUL



ALP-CC24AC16UL



ALP-CC24AC8UL



ALP-4CC615DCUL

## High current power supplies/chargers

### ALP-P3A

- Switch selectable 6-12-24 VDC output
- 3 amps continuous power supply current at 6-12-24 VDC
- Maximum battery charge current 350mA
- AC input and DC output LED indicators
- PTC Battery Protection



### ALP-P5A

- Switch selectable 6-12-24 VDC output
- 5 amps continuous power supply current at 6-12-24 VDC
- Maximum battery charge current 350mA
- AC input and DC output LED indicators
- PTC battery protection

### ALP-P10A

- Switch selectable 12-24 VDC output
- 10 amps continuous power at 12-24 VDC
- Maximum battery charge current 700mA
- AC input & DC output LED indicators
- Thermal overload and short circuit protection

## Power distribution boards

### ALP-DMOD-4OUT, ALP-DMOD-8OUT

- Converts single AC or DC input into 4 or 8 individually fused outputs, respectively
- Fuses are rated at 3 amp and up to 5 amp fuses may be used
- Up to 28 VAC/VDC
- AC power LED indicator; individual output LEDs
- Surge protected outputs
- Power on/off switch



## Linear power supply/charger

### ALP-LPS6-24VDC

- AC input and DC output LED indicators
- 6, 12 or 24 VDC selectable output
- Filtered and electronically regulated output
- Maximum battery charge current 300mA
- 1.5 amp continuous current rating at 6 and 12 VDC
- 1 amp continuous current rating at 24 VDC
- Thermal overload and short circuit protection with auto reset
- PTC battery protection



## Access power controller

### ALP-AMOD8

- 12 to 24 Volt, AC or DC operation
- Flexible power supply input options
- 8 Access control system trigger inputs
- 8 independently controlled outputs
- 8 auxiliary power outputs
- Output fuses rated at 3A, main fuse rated at 10 amps
- Red LEDs indicate outputs are energized
- Flexible fire alarm disconnect input and output options
- FACP output relay rated at 1 amp, 28 VDC



## Relay module

### ALP-RB6-24VDC

- 12 or 24 VDC selectable operation
- Coil draws 120mA
- 5 amp/120 VAC/28 VDC DPDT contacts
- DC LED indicator



## Break away relay 6-pak

### ALP-RB1224VDC/6

- AC input and DC output LED
- 6 or 12 VDC selectable operation
- Form "C" 10 amp/120 VAC or 28 VDC relay contact
- Coil draws 50mA
- 5 amp/120 VAC/28 VDC DPDT contacts
- LED indicates when relay is energized



## 12/24VDC programmable timer

### ALP-PTM

- Multipurpose applications, e.g., access control, siren/bell cut off module, dialer delay, guard tour supervisory time, etc.
- Fast, accurate time ranges from 1 sec. to 60 min.
- LED indicates relay is energized.
- Form "C" relay contacts are 8 amps at 120VAC/28VDC.
- Current draw: Standby 3mA, relay energized 40mA.
- Triggers via positive DC voltage, dry contact closure, or removal of contact closure.
- Selectable relay activation at the start or end of the timing cycle. Built-in reset.
- **Also available:** Single Channel (NPDTM7D24H) and Dual Channel Annual Timers (NP-DTM7D24H-D) also available.

## Transformers

Model #	Description
ALP-TRF1650.....	16VAC 50VA Plug in
ALP-TRF2450.....	24VAC 50VA Plug in
ALP-TRF24100.....	24VAC 100VA
ALP-TRF28100.....	28VAC 100VA
ALP-TRF28175.....	28VAC 175VA
ALP-TRF28300.....	28VAC 300VA

## Universal power supply cabinet

### ALP-PSC500

- Large latching cabinet for use with Platinum Power supplies & transformers
- Matched pre-drilled mounting holes for easy use universally in the Napco line

# \$\$\$ Grow with Alarm Lock's Profit Center Program

Today's electronic pushbutton locks offer considerable security, key-free consumer convenience and ease of retrofitting standard door locks. Add to that more stringent security needs, virtually everywhere, and the result has been that installations of standalone access control locks, with and without door-usage logging, are increasingly in demand, with no end or slow down in sight. For those eager to enter this lucrative, booming market and expand and complement their traditional offerings, Alarm Lock, the leader in electronic pushbutton access locks, has specially designed a program for retail locksmiths to tap this potential and grow their business.

The Alarm Lock Profit Center Program offers retail locksmiths and their technicians FREE simple, step-by-step, field-proven methods. Trained professionals teach and guide locksmith/dealers exactly how to install, sell and compete effectively in this marketplace. Your technicians will become expert on the product, its application and its marketing, through our comprehensive system of training seminars, joint sales calls and presentations to your customers! In simplest terms, we've designed a program that will help you secure and grow your bottom line with us. To enroll in our Free "Profit Center Program" just contact your Alarm Lock Sales Representative at 1-800-ALA-LOCK.

# Trilogy: Family of access control products

MODEL/ FEATURE	DL2700	DL2800	DL3000	DL3200	DL4100	DL5300	PDL3000	DL3500	PDL3500	PDL4100
<b>Lock Type</b>	Cylindrical	Cylindrical	Cylindrical	Cylindrical	Cylindrical	Cylindrical	Cylindrical Prox	Mortise	Mortise Prox	Cylindrical Prox
<b>User Codes</b>	100	200	300	2000	2000	2000	2000	300	2000	2000
<b>Code Length</b>	3-5 digits	3-6 digits	3-6 digits	3-6 digits	3-6 digits	3-6 digits	3-6 digits	3-6 digits	3-6 digits	3-6 digits
<b>Program- ming</b>	Keypad only	Keypad /PC	Keypad /PC	Keypad /PC	Keypad /PC		Keypad /PC	Keypad /PC	Keypad /PC	Keypad /PC
<b>Vandal-Proof Keypad</b>	All metal, 12 button	All metal, 12 button	All metal, 12 button	All metal, 12 button	All metal, 12 button	Dual sides, All metal, 12 button	All metal, 12 button	All metal, 12 button	All metal, 12 button	All metal, 12 button
<b>Trim w/Rug- ged Clutch</b>	Straight or curved lever	Straight or curved lever	Straight or curved lever	Straight or curved lever	Straight or curved lever	Straight or curved lever	Straight or curved lever	Straight or curved lever	Straight or curved lever	Straight or curved lever
<b>Audit Trail Events</b>		1000	1600	40000	40000	40000	40000	40000	40000	40000
<b>Scheduled events</b>		150	150	500	500	500	500	500	500	500
<b>Proximity Reader</b>							Prox		Prox	Prox
<b>Privacy Lockout</b>					Privacy/ Lock-out					Privacy/ Lock-out
<b>Classroom/ Deadbolt</b>								CR or DB	CR or DB	
<b>Weather- proof -31 to 151 F</b>	WP version	Standard	WP version	Standard	Standard	Standard	Standard	Standard	Standard	Standard
<b>Handing</b>	Nonhanded	Nonhanded	Nonhanded	Nonhanded	Nonhanded	Nonhanded	Nonhanded	Handed; Field Reversible	Handed; Field Reversible	Nonhanded
<b>Door Thickness</b>	1-5/8 to 1- 7/8" (others on request.)	1-5/8 to 1- 7/8" (others on request.)	1-5/8 to 1- 7/8" (others on request.)	1-5/8 to 1-7/8" (others on request.)	1-5/8 to 1- 7/8" (others on request.)	1-5/8 to 1- 7/8" (others on request.)	1-5/8 to 1- 7/8" (others on request.)	1-5/8 to 1-7/8"	1-5/8 to 1-7/8"	1-5/8 to 1-7/8" (others on request.)
<b>Backset</b>	2-3/4" (included); 2-3/8" option.	2-3/4" (in- cluded); 2-3/8" option.	2-3/4" (in- cluded); 2-3/8" option.	2-3/4" (in- cluded); 2-3/8" option.	2-3/4" (in- cluded); 2-3/8" option.	2-3/4" (in- cluded); 2-3/8" option.	2-3/4" (in- cluded); 2-3/8" option.	2-3/4" (in- cluded)	2-3/4" (in- cluded)	2-3/4" (in- cluded); 2-3/8" option.
<b>Cylinder</b>	Large key-in- knob, incld -or- IC Prep for Best/ Falcon/Arrow (w/o cyld.)	Large key-in- knob, incld -or- IC Prep for Best/ Falcon/Arrow (w/o cyld.)	Large key-in- knob, incld -or- IC Prep for Best/ Falcon/Arrow (w/o cyld.)	Large key-in- knob, incld -or- IC Prep for Best/ Falcon/Arrow (w/o cyld.)	Large key-in- knob, incld -or- IC Prep for Best/ Falcon/Arrow (w/o cyld.)	Large key-in- knob, incld -or- IC Prep for Best/ Falcon/Arrow (w/o cyld.). Two on both sides of door	Large key-in- knob, incld -or- IC Prep for Best/ Falcon/Arrow (w/o cyld.)	Generic mortise cylinder, supplied.	Generic mortise cylinder, supplied.	Large key-in- knob, incld -or- IC Prep for Best/Fal- con/Arrow (w/o cyld.)
<b>Special Order Cylinders</b>	Yale, Medeco, Sargent, Corbin/ Russwin, Schlage	Yale, Medeco, Sargent, Corbin/ Russwin, Schlage	Yale, Medeco, Sargent, Corbin/ Russwin, Schlage	Yale, Medeco, Sargent, Corbin/ Russwin, Schlage	Yale, Medeco, Sargent, Corbin/ Russwin, Schlage	Yale, Medeco, Sargent, Corbin/ Russwin, Schlage	Yale, Medeco, Sargent, Corbin/ Russwin, Schlage			Yale, Medeco, Sargent, Corbin/ Russwin, Schlage
<b>Relay options</b>	yes		yes	yes	yes	yes	yes	yes	yes	yes
<b>Battery/ Cycles Typ.</b>	5AA; 100000	5AA; 100000	5AA; 100000	5AA; 100000	5AA; 100000	5AA; 100000	5AA; 60000	5AA; 100000	5AA; 60000	5AA; 60000
<b>Ratings</b>	BHMA Grade 1 Lockset; 3hr. Fire Rated Latch	BHMA Grade 1 Lockset; 3hr. Fire Rated Lockset	BHMA Grade 1 Lockset; 3hr. Fire Rated Lockset	BHMA Grade 1 Lockset; 3hr. Fire Rated Lockset	BHMA Grade 1 Lockset; 3hr. Fire Rated Lockset	BHMA Grade 1 Lockset; 3hr. Fire Rated Lockset	BHMA Grade 1 Lockset; 3hr. Fire Rated Lockset	BHMA Grade 1 Lockset 3 Hr Fire	BHMA Grade 1 Lockset 3 Hr Fire	BHMA Grade 1 Lockset; 3hr. Fire Rated Lockset
<b>Architectural Finishes</b>	US26, US26D, US3, US5 & 10B	US26, US26D, US3, US5 & 10B	US26, US26D, US3, US5 & 10B	US26, US26D, US3, US5 & 10B	US26, US26D, US3, US5 & 10B	US26, US26D, US3, US5 & 10B	US26, US26D, US3, US5 & 10B	US26, US26D, US3, US5 & 10B	US26, US26D, US3, US5 & 10B	US26, US26D, US3, US5 & 10B

	DL4500	PDL4500	PDL5300	DL1200	DL1300	PDL1300	ETDL	ETPDL	DK3000	PDK3000
	Mortise	Mortise Prox	Cylindrical	Narrow Stile	Narrow Stile	Narrow Stile	For use w/ panic device	For use w/ panic device	Standalone Keypad	Standalone Keypad
	2000	2000	2000	100	2000	2000	2000	2000	2000	2000
	3-6 digits	3-6 digits	3-6 digits	3-6 digits	3-6 digits	3-6 digits	3-6 digits	3-6 digits	3-6 digits	3-6 digits
	Keypad /PC	Keypad /PC	Keypad /PC	Keypad	Keypad /PC	Keypad /PC	Keypad /PC	Keypad /PC	Keypad /PC	Keypad /PC
	All metal, 12 button	All metal, 12 button	Dual sides, All metal, 12 button	All metal, 12 button	All metal, 12 button	All metal, 12 button	All metal, 12 button	All metal, 12 button	All metal, 12 button	All metal, 12 button
	Straight or curved lever	Straight or curved lever	Straight or curved lever	Straight or curved lever, thumbturn	Straight or curved lever, thumbturn	Straight or curved lever, thumbturn	Straight or curved lever	Straight or curved lever		
	40000	40000	40000		40000	40000	40000	40000	40000	40000
	500	500	40000		500	500	500	500	500	500
		Prox	Prox			Prox	Prox	Prox		Prox
	Privacy/ Lock-out	Privacy/ Lock-out								
	CR or DB	CR or DB								
	Standard	Standard	Standard	Standard	Standard	Standard	Standard	Standard	Standard	Standard
	Handed; Field Reversible	Handed; Field Reversible	Nonhanded	Nonhanded	Nonhanded	Nonhanded	Nonhanded.	Nonhanded.		
	1-5/8 to 1-7/8"	1-5/8 to 1-7/8"	1-5/8 to 1-7/8" (others on request.)	1-3/4"	1-3/4"	1-3/4"	1-5/8 to 1-7/8" (others on request.)	1-5/8 to 1-7/8" (others on request.)		
	2-3/4" (included)	2-3/4" (included)	2-3/4" (included); 2-3/8" option	31/32", 1-1/8", 1-1/2"	31/32", 1-1/8", 1-1/2"	31/32", 1-1/8", 1-1/2"				
	Generic mortise cylinder, supplied.	Generic mortise cylinder, sup- plied.	Large key-in- knob, incld -or- IC Prep for Best/ Falcon/Arrow (w/o cylnd.). Two on both sides of door	Generic 1-1/4" mortise cylinder, supplied. 1-1/8", 1-1/4"1-3/8" supported	Generic 1-1/4" mortise cylinder, supplied. 1-1/8", 1-1/4"1-3/8" supported	Generic 1-1/4" mortise cylinder, supplied. 1-1/8", 1-1/4"1-3/8" supported	Generic Rim Cylinder, sup- plied. Other mfrs. Cylin- der Adapters must be ordered separately.	Generic Rim Cylinder, sup- plied. Other mfrs. Cylin- der Adapters must be ordered separately.		
			Yale, Medeco, Sargent, Corbin/ Russwin, Schlage	Yale, Medeco, Corbin/ Russwin, Schlage	Yale, Medeco, Corbin/ Russwin, Schlage	Yale, Medeco, Corbin/ Russwin, Schlage				
	yes	yes	yes				yes	yes	yes	yes
	5AA; 60000	5AA; 60000	5AA; 100000	2-3V Lithium, 100,000	2-3V Lithium, 80,000	2-3V Lithium, 65,000	5AA; 60000	5AA; 60000		
	BHMA Grade 1 Lockset 3 Hr Fire	BHMA Grade 1 Lockset 3 Hr Fire	BHMA Grade 1 Lockset; 3hr. Fire Rated Lockset	BHMA Grade 1 Lockset	BHMA Grade 1 Lockset	BHMA Grade 1 Lockset	BHMA Grade 1 Lockset	BHMA Grade 1 Lockset	UL	UL
	US26, US26D, US3, US5 & 10B	US26, US26D, US3, US5 & 10B	US26, US26D, US3, US5 & 10B	US10B, US26D, MS, MB	US10B, US26D, MS, MB	US10B, US26D, MS, MB	US26, US26D, US3, US5 & 10B	US26, US26D, US3, US5 & 10B	US26, US26D, US3, US5, 10B, Metallic Silver or Bronze	US26, US26D, US3, US5, 10B, Metallic Silver or Bronze



# Trilogy: The leader in electronic pushbutton locks



Trilogy provides a simple solution to implementing **HIPAA** regulations and securing private health information records with the minimum effort and fuss – guaranteed.

For all those who handle patient records:  
Are they secure around the clock? Who accessed them, when?

Those who access these files must be logged for later reference. Trilogy locks by Alarm Lock are HIPAA compliant by design, citing chapter and verse, below:



**“Security Standards for Health Information (Public Law 104-191; Item D, Section 1173) (1) Security Standards. – (shall) take into account:**

**“the value of audit trails in record systems.” (iv)**

- Get 40,000 event audit trails from the Trilogy Lock locally or at your PC. Know who entered what door by date and time and name.

**“the costs of security measures;” (ii)**

- Trilogy locks: Economically and easily installed in less than an hour, retrofitting any lockset. No wires to run. Use inside or out, including weather extremes.
- 2000 user PINs or ID Cards supported at each lock.
- Self-contained, battery operated. No keys to manage. Key override including your choice of optional IC cores.

**“the need for training persons who have access to health info.” (iii)**

- Easy to use with 3 to 6 digit PINs. No user training required.
- Keypad programmable for master, management and user code hierarchy, with lockdown, group lockout or individual user code disable – tool-free.
- With one finger, managers can add authorized users and/or disable any staffer or ex-staffers’ code in seconds, too--without delays and expense getting any keys back or rekeying locks.

**To avoid fines of \$25,000 to \$250,000:**

**“covered entities (shall) provide records and compliance reports and cooperate with and permit access to information for investigation”**

- Get hard copy records or store electronic files of up to 40K Audit trails and door access, example, door to medical records room A-M, by time, date and user. Query use with Trilogy’s handheld printer or archive at your PC using Trilogy Windows.

## About HIPAA (Health Insurance Portability and Accountability Act):

HIPAA (US Health and Human Services Law 104-191) is a statute enacted in 1996 by Congress to encourage national standards to protect the privacy of Personal Health Information (PHI). HIPAA Compliance, is required by institutions handling confidential patient records. The US Department of Health and Human Services issued the Privacy Rule to implement the requirements of HIPAA. This rule addresses the use and disclosure of individual’s protected health information, as well as standards for individuals’ privacy rights to understand and control how their health info. is used. **Deadlines for all Health Care Providers, including health plans, their administrators and their clearing houses, have now all expired.**

To comply, a covered entity must develop and implement policies and procedures that restrict access and uses of protected health information based on specific roles of the members of their workforce. They must identify the persons, or classes of persons in the workforce who need access to protected health information to carry out their duties, the categories of protected health information to which access is needed and any conditions under which they need the information to do their jobs.

“Data must be safeguarded ... Example: securing medical records with lock and key or pass code, and limiting access to keys or pass codes.”

The proven choice of more hospitals, firms and institutions –

## For more than three decades ...

---



Alarm Lock Systems, Inc. has built a strong reputation as a respected leader in the design and manufacture of electronic and mechanical access and egress control products. Originally known worldwide for its superior Sirenlock™ panic exit and delayed egress exit alarms in full-door and clapper styles, Alarm Lock has nearly eclipsed its original product success with that of another – the incredibly-popular, innovative Trilogy® line of standalone access locks. These aesthetically-pleasing, durable electronic digital locks, also known as the Trilogy T2 and T3 Series, are growing strong. Used by today's best-known, leading retailers, colleges and institutions around the globe, handsome Trilogy locks come in weatherproof models, as well as cylindrical, mortise, new narrow style and exit trim lock models. Many offer easy to use, free Windows based PC programming software plus audit trail that allows a log of all entry activity to be printed to either a handheld infrared printer or a Windows-based PC. Many models even offer real-time locking and event scheduling for weekends, holidays and the like, selected by lock and by user or user group, for real labor savings. Trilogy prox locks combine the key features of established standalone Trilogy locks with proximity technology. Compatible with virtually all HID systems cards and keyfobs, All Trilogy prox lock models bridge the gap between single door and badged access systems.

Trilogy is the choice of prestigious universities, leading retailers, top chain stores, hospitals, laboratories, airports and office facilities – everywhere secured access or egress is a concern. With Alarm Lock's wide range of electronic access locks, Trilogys push all the right security buttons for security directors, business owners, and facility managers, who know that Alarm Lock's keyless access dependably promises time-automated security and a wealth of management information. Meanwhile, Alarm Lock's door alarms and panic exit hardware devices remain a security industry staple.



hospital



retail



airport



schools



pharmacy



office

# Keyless access locks trusted by more leading retailers, firms, hospitals, schools & airports



**ALARM LOCK**

345 Bayview Avenue • Amityville, NY 11701 • USA  
1-800-ALA-LOCK • 631-789-4871 • Fax: 631-789-3383  
[www.alarmlock.com](http://www.alarmlock.com)

A Napco Security Group Company  
Publicly traded on NASDAQ: **NSSC**

Trilogy® is a registered trademark of Alarm Lock. Sirenlock is a trademark of Alarm Lock. ©Alarm Lock, 2006. Specifications subject to change. Patents Pending.  
ALA112L