



Features & Dimensions

Wood Door Concealed Vertical Rod Exit Device

ANSI/BHMA

Grade 1

Handing

Device is non-handed. Lever Entry Trim is field reversible.

Pushbar Length

Standard Sizes: Dimensioned for 30", 36", 42" & 48" openings. Standard width bars can be field cut to the next smallest opening width.

Door Thickness

Suits 1-3/4" standard.

Projection

2-5/8" when fully projected, 1-5/8" when dogged.

Dogging

Standard dogging with hex key or optional cylinder dogging for 8900 Series only. Electric dogging also available for 3900 and 8900 Series.

Materials

Pushbar made of extruded aluminum, clad or anodized in a variety of finishes.

Fasteners

Standard self-tapping screws. Optional Sex Bolt Kits-26-0584 (2 required per device) Specify finish.

Strike

Made of hardened steel. Supplied with exit device.

Entry Lever:

(Functions 08, 09) Accepts any standard diameter Mortise cylinder with MS® cam. Accommodates cylinder lengths from 1" to 1-1/4".

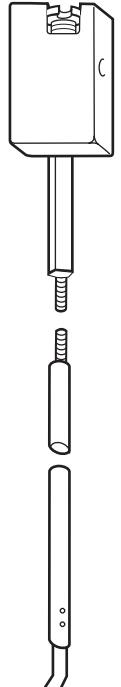
Warranty

Two year limited.

AVAILABLE FINISHES

- 313** Dark Bronze Anodized
- 335** Black Anodized
- 628** Clear Anodized
- US3** Bright Brass
- US4** Satin Brass
- US9** Bright Bronze
- US10** Satin Bronze
- 10B** Dark Bronze (Trim only)
- US32** Bright Stainless
- US32D** Satin Stainless

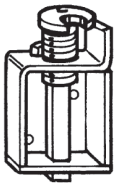
Consult factory for special finishes.



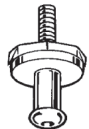
Bolt and Strikes

The patented top latching mechanism utilizes a rotating Top Bolt which deadlatches around the Header Strike, interlocking the door to the frame.

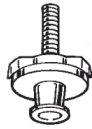
Standard and Fire-rated Header Strikes are available. For wood frames, an additional plate is supplied for securing the Header Strike.



Top Bolt



Fire-Rated Strike



Standard Strike

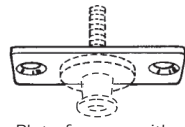
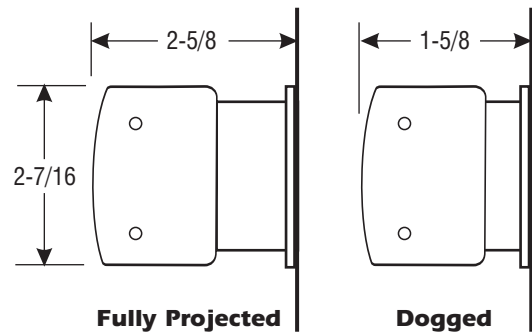


Plate for use with wood frames is furnished with 8900

Pushbar Dimensions

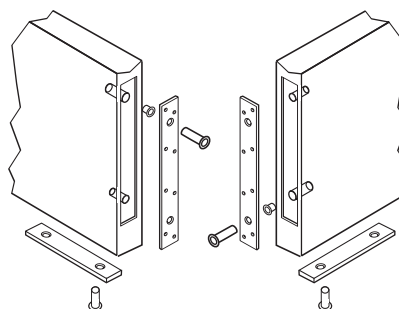


Fire Rating:

MODEL	TYPE	RATING	DOOR CONSTR.	MAX. SIZE SINGLE DOORS	MAX. SIZE PAIRS, DBL. EGRESS
3900	CVR-TRO	1-1/2 Hr.	Hollow Metal or Wood*	4'0" x 9'0" (Wood Door only)	8'0" x 9'0"

* Consult door manufacturer for available ratings.

Fusible Link Fire Pins



For 20-min. Fire Doors, no Fire Pins are required.

For 45-min. Fire Doors, Fusible Link Fire Pins are installed horizontally. One Fire Pin per door.

For 60 and 90-min. Fire Doors, Fusible Link Fire Pins are installed vertically. One Fire Pin per door.