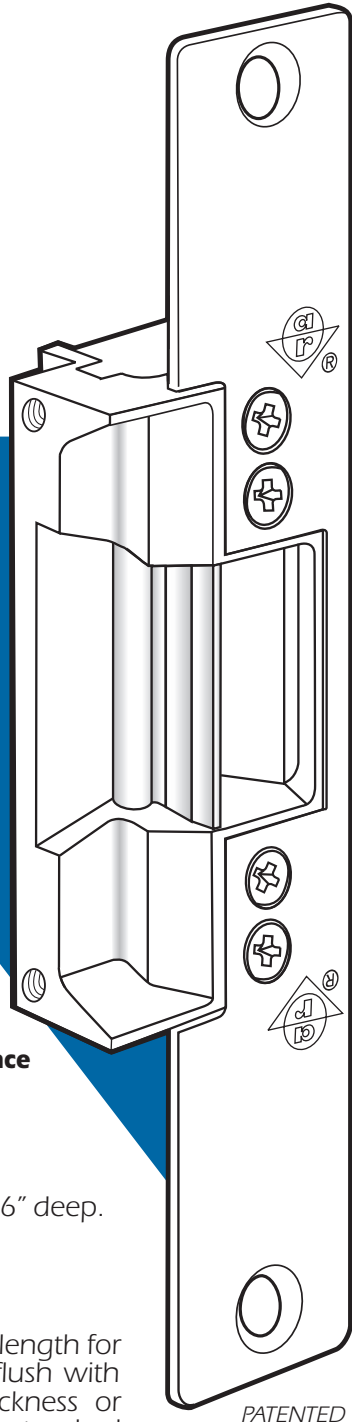


VOLTAGE	
12 or 24 volt DC	
CURRENT DRAW/AMPS	
Volts	DC Cont. or Intermittent
12	.33
24	.17



UL Listed for Burglary Resistance

7330 Compact Strike

ANSI/BHMA Type EO9322 (Grade 2)

LATCH TYPE	
	Adams Rite or Cylindrical Latches with 1/2" to 5/8" Projection.
DOOR FRAME TYPE	
	Aluminum Jamb

▼ Case

Approx. 1-1/8" x 3-3/8" x 1-1/16" deep. Made of zinc-aluminum alloy.

▼ Strike Lip

Basic strikes have lip of proper length for 1-3/4" thick door that closes flush with jamb edge. Where door thickness or jamb shape differs from this standard relationship, extended lip available, specified by last dash number.

▼ Fail-Secure/Fail-Safe

Shipped standard in fail-secure mode. Field convertible from one mode to the other.

▼ Strike Opening

5/8" x 1-3/8" x 1/2" deep. Bolt retainer jaw is stainless steel. Strike accepts bolt of any Adams Rite 4500 or 4700 Series deadlatch. See 7160 and 7170 strikes for use with other make Mortise latches.

▼ Faceplate

Measures 1-1/4" x 6-7/8". Faceplate is flat, with radiused corners. Available in our three most popular architectural finishes.

▼ Function

Remote electrical control of any narrow stile or hollow metal door equipped with an Adams Rite Series 4500 or 4700 (or similar) deadlatch. Large faceplate is designed to cover strike opening when converting from an MS[®] pivoted-bolt deadlock to a deadlatch. Electrical actuation unlocks strike jaw, releasing latchbolt so door can be opened without operating latch itself. Extremely compact mechanism fits into jamb sections as shallow as 1-1/16".

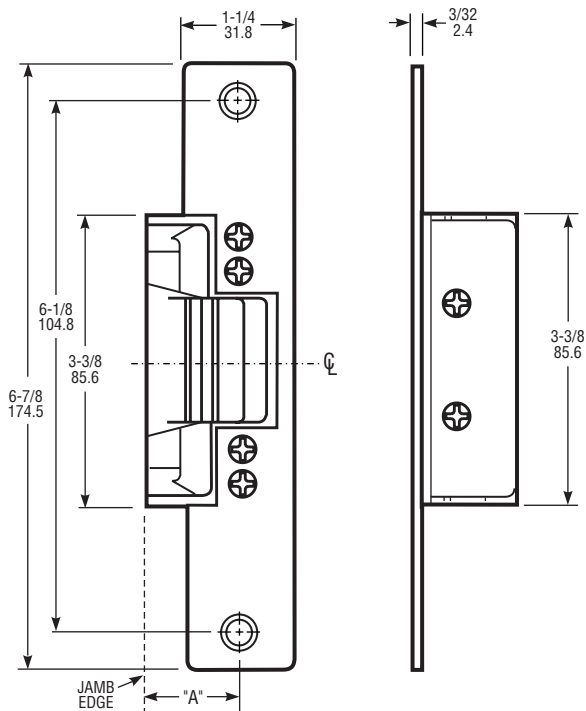
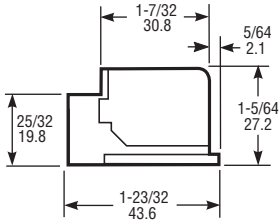


7330 Electric Strike

DIMENSIONS

INCHES
MILLIMETERS

Nominal, subject to tolerance extremes.

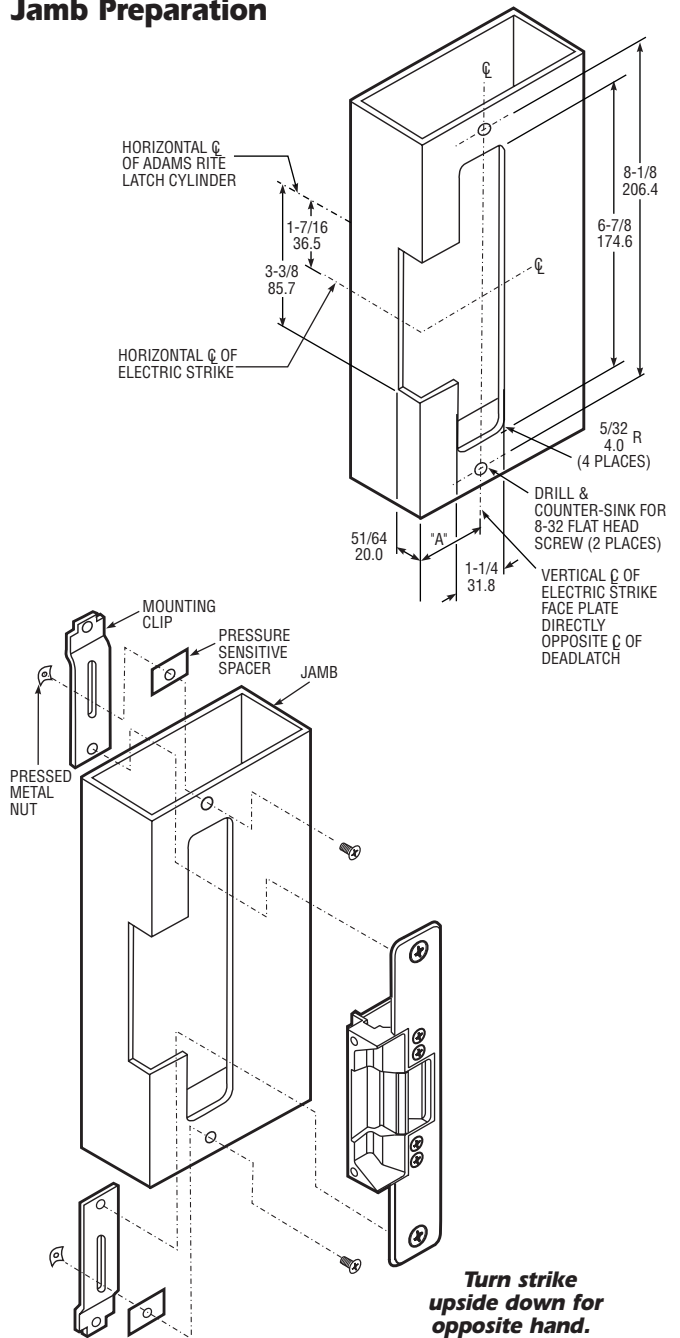


STANDARD UNIT FITS DIM. "A" UP TO 1.09" (SEE DASH NO.)

MOUNTING BRACKETS FURNISHED

INSTALLATION

Jamb Preparation



Turn strike upside down for opposite hand.

HOW TO ORDER

Specify quantity and the following information.

Voltage 3 12 Volt DC 5 24 Volt DC	Current & Duty 1 DC Continuous or Intermittent	Features* 0 Std/Fail-Secure
--	---	--

7330 - 310 - 628 - 00

Finish 628 Clear Anodized 313 Dark Bronze Anod. 335 Black Anodized	Lip Extension (Dim. "A") (Door Centerline to Jamb Edge) 00 1.07" or less 50 1.38" 05 2.00" 07 2.25"
---	---

*Fail-secure can be field converted to fail-safe.

STANDARD PACKAGE

Individually boxed with mounting screws. Includes mounting brackets and adhesive shims for use where welded tabs are omitted.

OPTIONS

Choice of voltage in DC. Available with extended strike lip (see chart). Assembled fail-secure as standard (locked when unpowered), but can be field-converted to fail-safe.