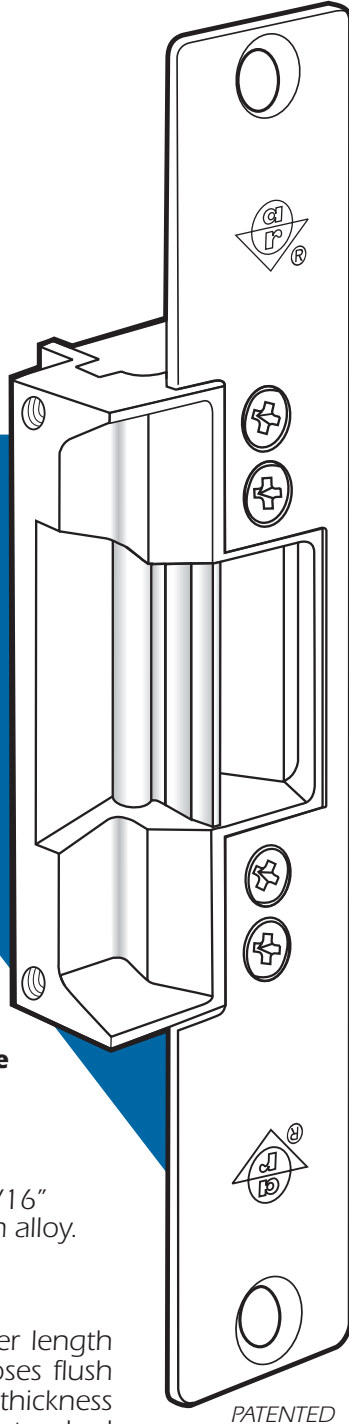
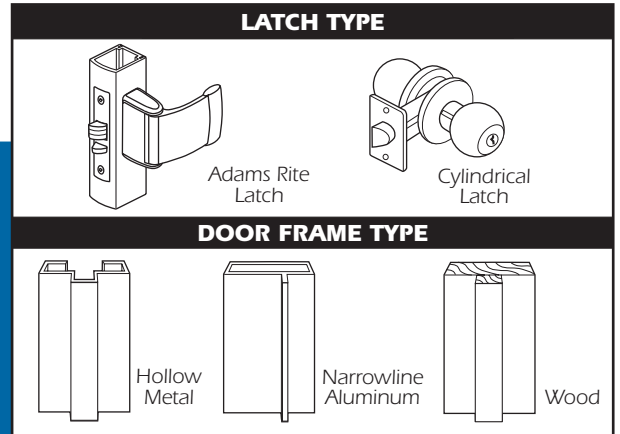


VOLTAGE	
12 or 24 volt DC	
CURRENT DRAW/AMPS	
Volts	DC Cont. or Intermittent
12	.33
24	.17



## 7310, 7311 Compact Strike

ANSI/BHMA Type EO9322 (Grade 2)



**UL Listed for Burglary Resistance**

### ▼ Case

Approx. 1-1/8" x 3-3/8" x 1-1/16" deep. Made of zinc-aluminum alloy.

### ▼ Strike Lip

Basic strikes have lip of proper length for 1-3/4" thick door that closes flush with jamb edge. Where door thickness or jamb shape differs from this standard relationship, extended lip available, specified by last dash number.

### ▼ Fail-Secure/Fail-Safe

Shipped standard in fail-secure mode. Field convertible from one mode to the other.

### ▼ Strike Opening

5/8" x 1-3/8" x 1/2" deep. Bolt retainer jaw is stainless steel. Strike accepts bolt of any Adams Rite 4500/4700 Series deadlatch. See 7160 and 7170 strikes for use with other make Mortise latches.

### ▼ Faceplate

Faceplate for 7310 measures 1-7/16" x 7-15/16". For 7311, faceplate is 1-7/16" x 10-1/4". Available in Satin Chrome or Dark Bronze finishes.

### ▼ Function

Remote electrical control of any door equipped with cylindrical latchset or Adams Rite Series 4500 or 4700 (or similar) deadlatch. Electrical actuation unlocks strike jaw, releasing latchbolt so door can be opened without operating latch itself. Extremely compact mechanism fits into jamb sections as shallow as 1-1/16".

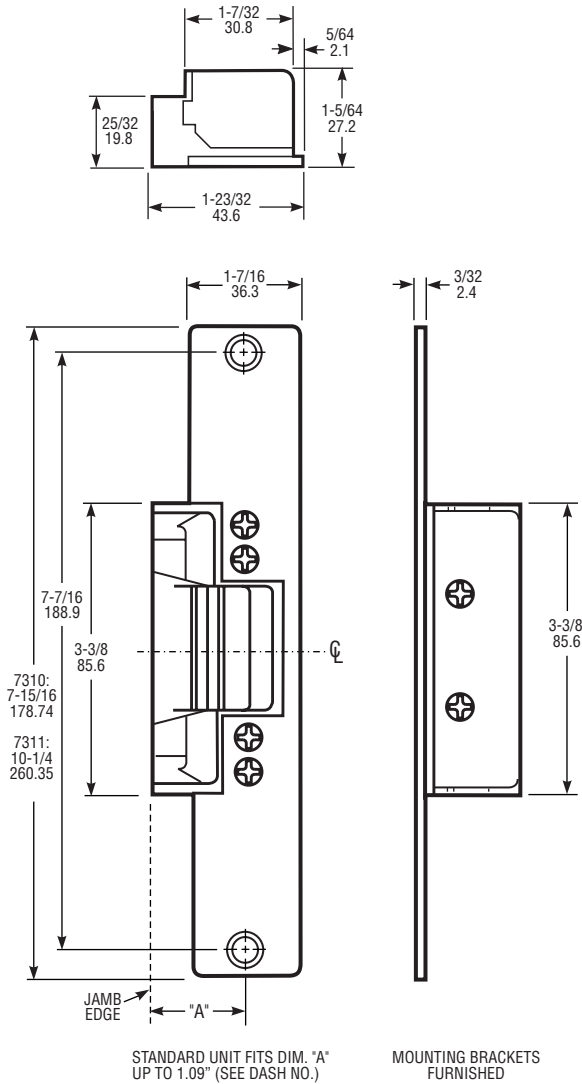


# 7310, 7311 Electric Strike

## DIMENSIONS

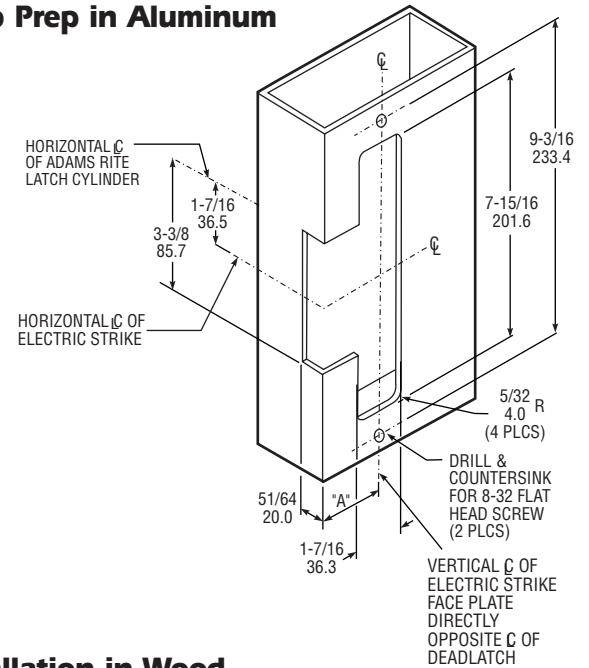
**INCHES  
MILLIMETERS**

Nominal, subject to tolerance extremes.

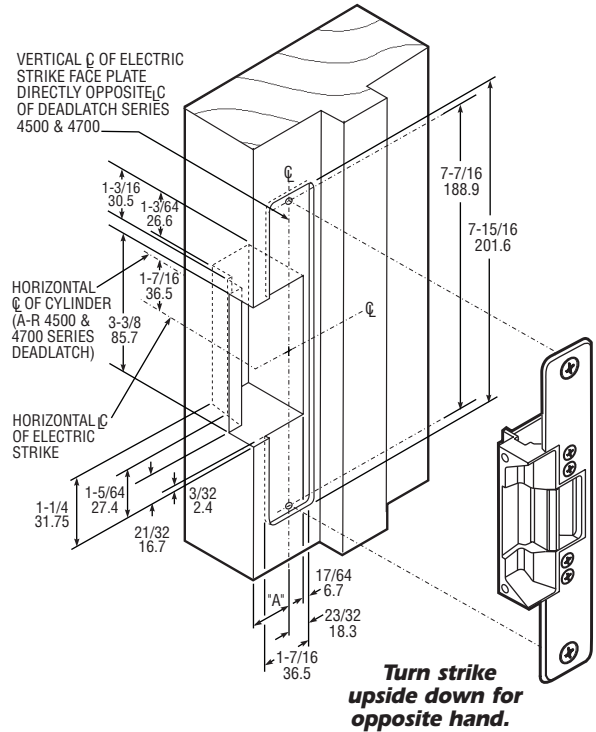


## INSTALLATION

### Jamb Prep in Aluminum



### Installation in Wood



## HOW TO ORDER

Specify quantity and the following information.

### Faceplate

**7310** 7-15/16"  
**7311** 10-1/4"

### Current & Duty

**1** DC Continuous or Intermittent

### Features\*

**0** Std/Fail-Secure

# 7310 - 310 - 628 - 00

### Voltage

**3** 12 Volt DC  
**5** 24 Volt DC

### Finish

**652** Satin Chrome  
**640** Oil-Rubbed Bronze

### Lip Extension (Dim. "A")

(Door Centerline to Jamb Edge)

**00** 1.07" or less  
**50** 1.38"  
**05** 2.00"  
**07** 2.25"

\*Fail-secure can be field converted to fail-safe.

## STANDARD PACKAGE

Individually boxed with mounting screws. Includes mounting brackets and adhesive shims for use where welded tabs are omitted.

## OPTIONS

Choice of voltage in DC. Available with extended strike lip (see chart). Assembled fail-secure as standard (locked when unpowered), but can be field-converted to fail-safe.