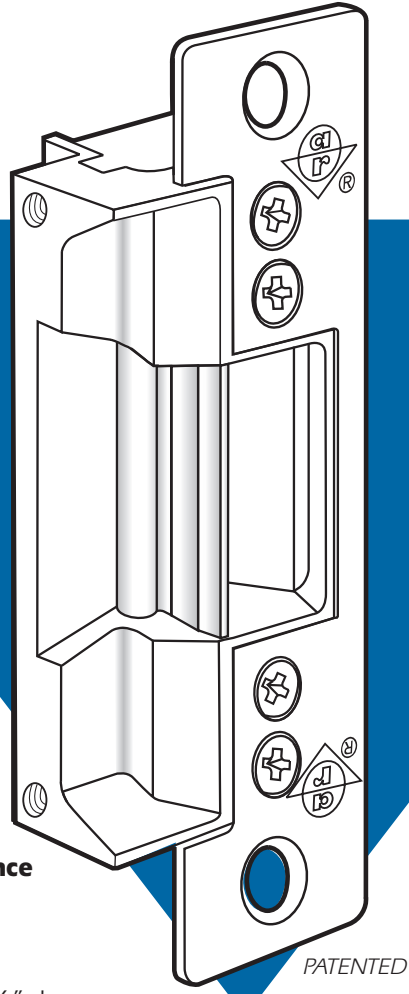


VOLTAGE	
12 or 24 volt DC	
CURRENT DRAW/AMPS	
Volts	DC Cont. or Intermittent
12	.33
24	.17

7300 Compact Strike

ANSI/BHMA Type EO9322 (Grade 2)



UL Listed for Burglary Resistance

LATCH TYPE	
	Adams Rite or Cylindrical Latches with 1/2" to 5/8" Projection.
DOOR FRAME TYPE	
	Aluminum Jamb

▼ Case

Approx. 1-1/8" x 3-3/8" x 1-1/16" deep. Made of zinc-aluminum alloy.

▼ Strike Lip

Basic strikes have lip of proper length for 1-3/4" thick door that closes flush with jamb edge. Where door thickness or jamb shape differs from this standard relationship, extended lip available, specified by last dash number.

▼ Fail-Secure/Fail-Safe

Shipped standard in fail-secure mode. Field convertible from one mode to the other.

▼ Strike Opening

5/8" x 1-3/8" x 1/2" deep. Bolt retainer jaw is stainless steel. Strike accepts bolt of any Adams Rite 4500 or 4700 Series deadlatch. See 7160 and 7170 strikes for use with other make Mortise latches.

▼ Faceplate

Measures 1-1/4" x 4-7/8". Faceplate is flat, with radiused corners. Available in our three most popular architectural finishes.

▼ Function

Remote electrical control of any door equipped with an Adams Rite Series 4500 or 4700 (or similar) deadlatch or "key-in-knob" sets. Electrical actuation unlocks strike jaw, releasing latchbolt so door can be opened without operating latch itself. Extremely compact mechanism fits into jamb sections as shallow as 1-1/16".

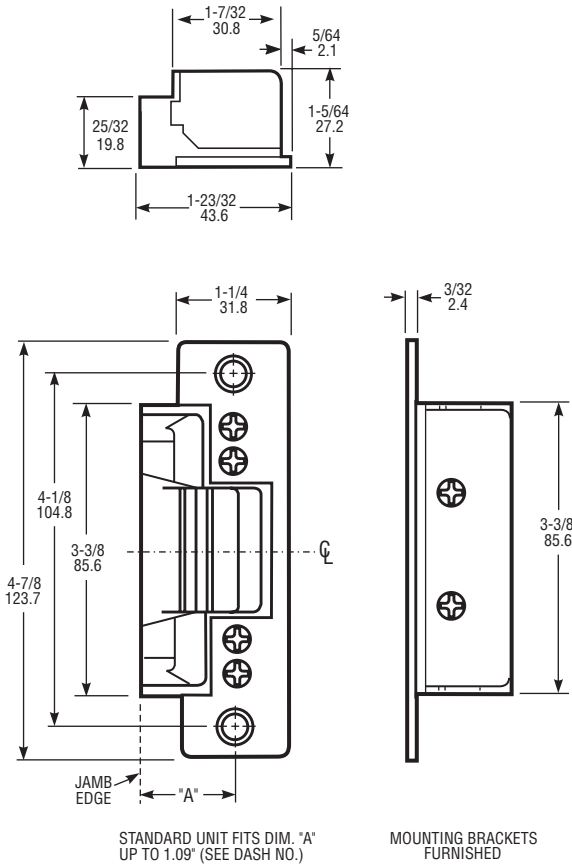


7300 Electric Strike

DIMENSIONS

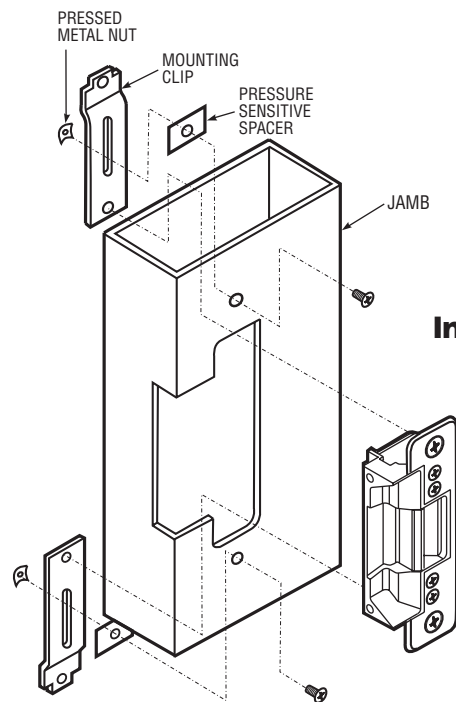
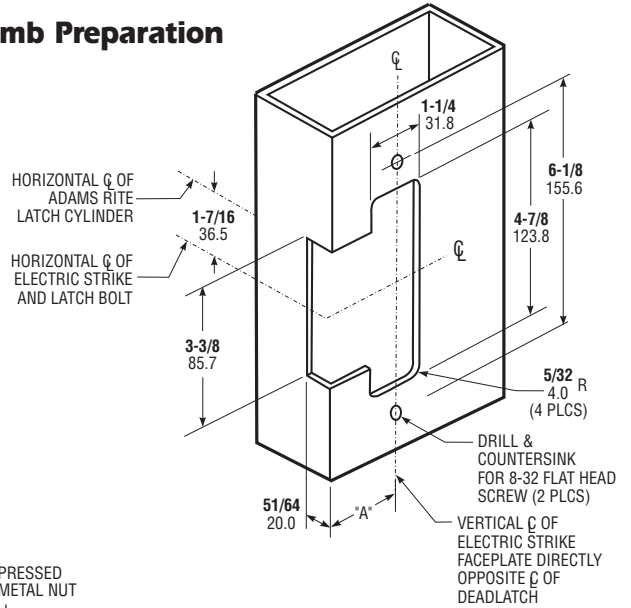
**INCHES
MILLIMETERS**

Nominal, subject to tolerance extremes.



INSTALLATION

Jamb Preparation



Installation

Turn strike upside down for opposite hand.

HOW TO ORDER

Specify quantity and the following information. Specify 7303 for model with no faceplate.

Voltage 3 12 Volt DC 5 24 Volt DC	Current & Duty 1 DC Continuous or Intermittent	Features* 0 Std/Fail-Secure
--	--	---------------------------------------

7300 - 310 - 628 - 00

Finish 628 Clear Anodized 313 Dark Bronze Anod. 335 Black Anodized 999 No Faceplate	Lip Extension (Dim. "A") (Door Centerline to Jamb Edge) 00 1.07" or less 50 1.38" 05 2.00" 07 2.25"
--	---

*Fail-secure can be field converted to fail-safe.

STANDARD PACKAGE

Individually boxed with mounting screws. Includes mounting brackets and adhesive shims.

OPTIONS

Choice of voltage in DC. Available with extended strike lip (see chart). Assembled fail-secure as standard (locked when unpowered), but can be field-converted to fail-safe.