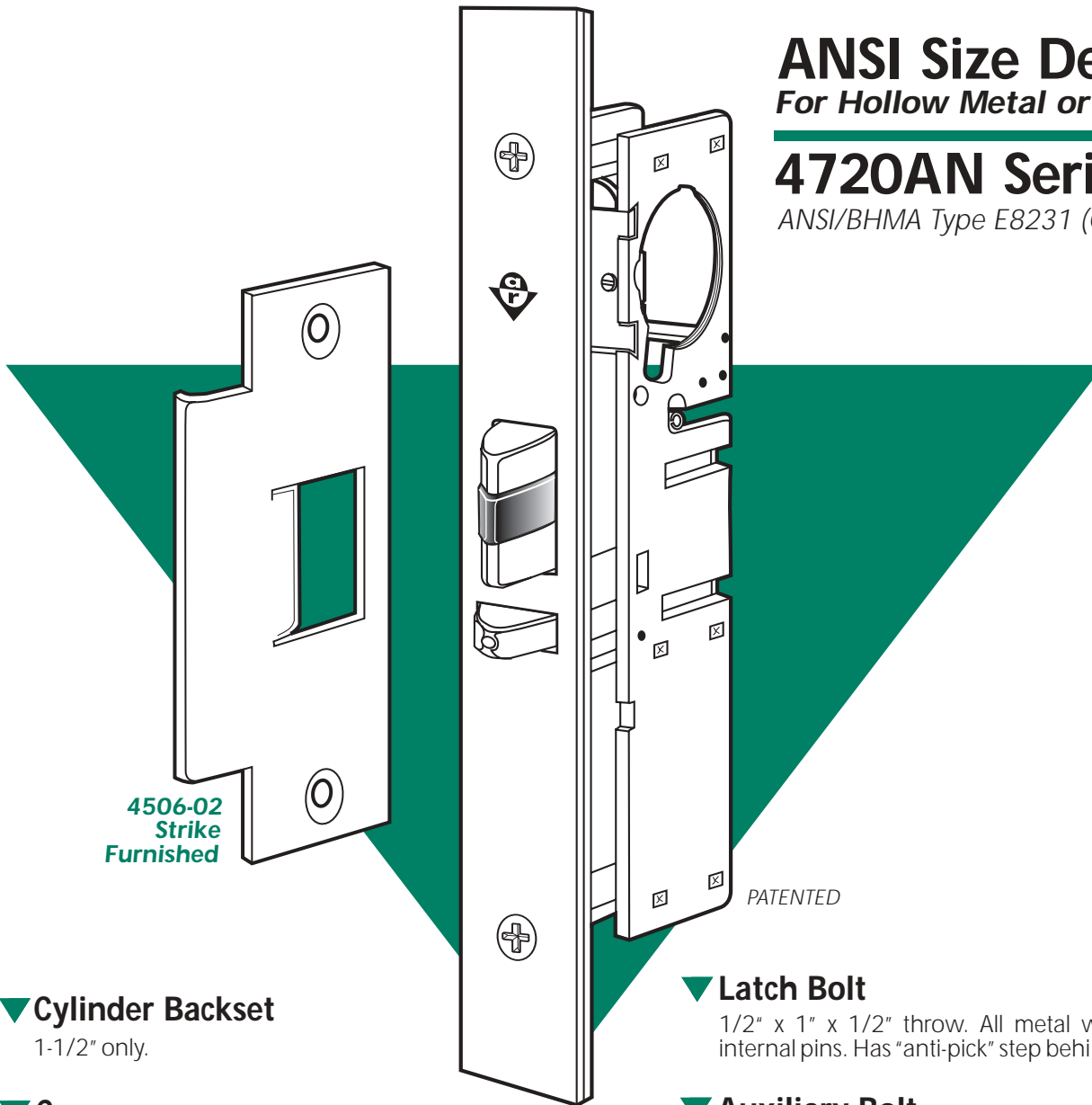


ANSI Size Deadlatch For Hollow Metal or Wood Doors

4720AN Series

ANSI/BHMA Type E8231 (Grade 1)



4506-02
Strike
Furnished

PATENTED

▼ Cylinder Backset

1-1/2" only.

▼ Case

Steel with corrosion-resistant plating.
1" x 5-13/16" x 2-5/32".

▼ Function

For hollow metal or wood doors prepared for hardware according to the specifications of the American National Standards Institute, the 4720AN Deadlatches provide precise traffic control. A key-controlled bolt hold-back feature allows a door to be free-swinging part of the day and exit-only when the bolt is free to latch. This allows a "locked" entrance to be used as an exit by customers or visitors already in the building. Interchangeable, without stile or jamb modification, with any MS1850SN Deadbolt of same faceplate shape. Replaces 4520ANSI Deadlatch.

▼ Latch Bolt

1/2" x 1" x 1/2" throw. All metal with hardened steel internal pins. Has "anti-pick" step behind mounting face.

▼ Auxiliary Bolt

All metal with hardened steel pin. Deadlocks latch bolt to prevent "loiding" or case-knife entry.

▼ Strikes

Stainless steel, US32D Satin finish (630). Furnished to ANSI preparation specifications for flat jamb. (See also page SW-26 and Electric Strike section.)

▼ Operation

Turn key or operate handle to retract spring-loaded latch bolt. To hold bolt retracted, push it in and secure by reverse turn of key (see back page). Uses any standard mortise cylinder with MS® cam (see page SW-28).



ADAMS RITE
MANUFACTURING CO.

260 Santa Fe Street
Pomona, California 91767
(800) 872-3267 Fax:(800) 232-7329
www.adamsrite.com

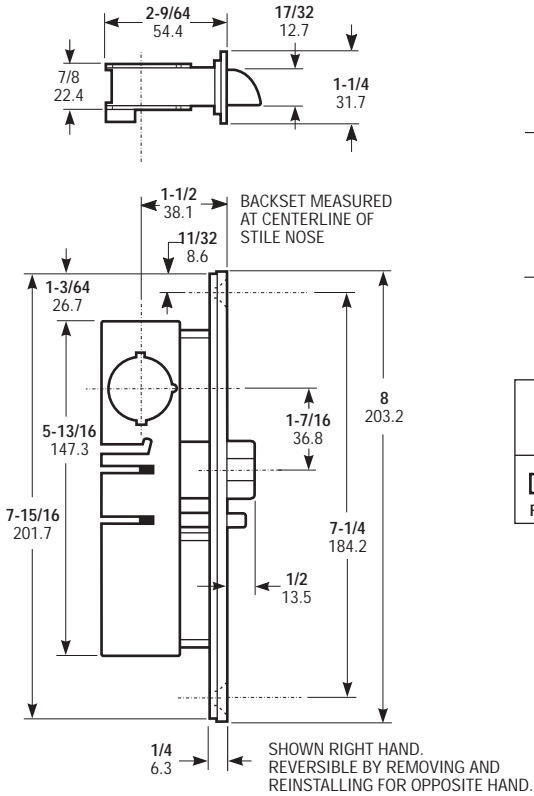


4720AN Series Deadlatch

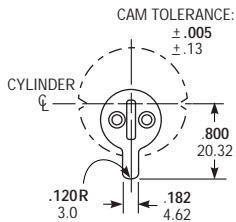
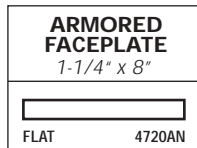
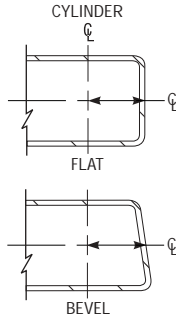
DIMENSIONS

INCHES
MILLIMETERS

Nominal, subject to tolerance extremes.



HOW BACKSET IS MEASURED:



Cylinder Cam

4720AN Series Deadlatches are operable by any standard 1-5/32" diameter mortise cylinder with special MS® cam dimensioned as shown. Cylinders with MS® cams can be readily obtained from most cylinder manufacturers. See page SW-28 for cylinder make and trimming information.

HOW TO ORDER

Specify quantity and the following information.
Order related hardware separately.

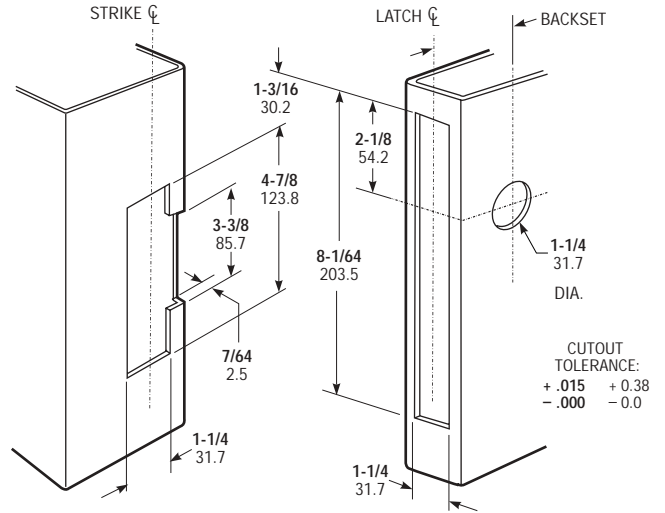
Door Nose Shape	Handing	Strike
OAN Flat	05 LH or RHR	602 4506
2AN Bevel	06 RH or LHR	000 Less Strike

4720AN06-602-313

Finish

628	Clear Anodized
612	Satin Bronze
313	Dark Bronze Anod.
335	Black Anodized

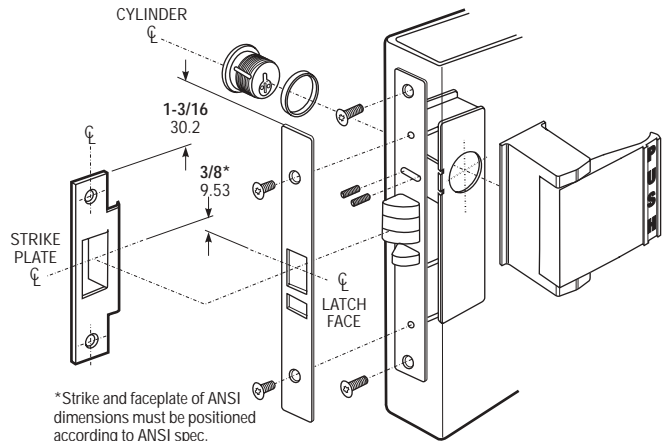
INSTALLATION



Jamb Preparation

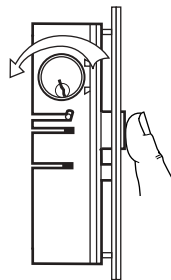
Door Preparation

Identical to MS1850SN Series
(See also prep for 4590 Paddle)



*Strike and faceplate of ANSI dimensions must be positioned according to ANSI spec.

Latch, Paddle & Cylinder Installation



Bolt Holdback

A reverse turn of the key (while bolt is held fully retracted) retains the bolt, allowing the door to be free swinging.

OPTIONS

Door Nose Shape, Finish, Strike and Handing must be specified when ordering. For Handles, see page SW-25 & 26. For Paddles, see page SW-27.

STANDARD PACKAGE

Individually boxed with strike and machine screws for mounting. Cylinders, paddle or handle available at extra cost. Shipping weight: 1-1/4 lbs. Also available in a 20 unit pack for volume users.